

***25A Kifissias ave., Athens 115 23***

***Tel: +30 210 6426193, Fax: +30 210 6423625***

***E-mail: [info@proton-mel.gr](mailto:info@proton-mel.gr)***

***Web site: [www.proton-mel.gr](http://www.proton-mel.gr)***

**PROTON CONSULTING ENGINEERS Ltd.**  
**25A Kifissias ave., Athens 115 23,**  
**Tel: 210 6426193, Fax: 210 6423625**

**E – mail: [info@proton-mel.gr](mailto:info@proton-mel.gr)**  
**Web site: [www.proton-mel.gr](http://www.proton-mel.gr)**

#### **A. BRIEF HISTORY**

PROTON CONSULTING ENGINEERS LTD is a design and supervision company providing consultancy services in the fields of Mechanical and Electrical Engineering, Energy and Industrial installations.

The services provided cover all the phases of a project: concept design, preliminary design, detailed design, tender documentation, bid evaluation, supervision and commissioning of project.

The company consists of experienced engineers with many years of cooperation, who have formed a specific conception and practice on the design and the way of construction of the installations in Greece, Europe and the Middle East.

The office is fully equipped with the latest and continuously updated Software and Hardware equipment.

The Hardware includes computers, printers, plotters, scanners, etc. The Software includes several calculation and drafting programs as well as word processing and accounting packages.

#### **B. REGISTRATION AND MEMBERSHIP**

- The firm is registered at the Greek Ministry of Environment, Housing and Public Works, for the category of Electromechanical Design with the highest grade experience certificate permitting the design of unlimited budget public projects.
- The firm is registered at the Technical Chamber of Greece.
- The firm is registered at the Greek Ministry of National Defense for the design of army projects.
- The firm is a member of the Hellenic Association of Consulting Firms.
- The firm is registered at the Greek Ministry of Environment, Housing and Public Works, for the inspection and edition of energy classification certificates for buildings.

#### **C. AREA OF EXPERTISE**

The company activity includes private and public projects in the following fields:

- Office Buildings
- Educational Buildings
- Hospitals
- Banks
- Hypermarkets – Commercial Centers
- Residential Complexes - Hotels
- Monasteries
- Administrations and Cultural Buildings
- Airports Facilities
- Athletic Centers
- Specific Installations Studies
- Industrial Buildings
- National Road Projects
- Power Plants

## **D. EQUIPMENT AND PACKAGES**

### **1. SOFTWARE**

Software is structured in three levels :

- Electromechanical Calculation Packages - Mathematical simulations - Measurements
- Word processing and Accounting Packages
- Design Packages

The main software Packages being used in the office are :

#### **a. Electromechanical Calculation Packages - Mathematical simulations - Measurements**

<b>Software Package Name</b>	<b>Description</b>
CDS Ultra Ver. 6.08	Air Conditioning Calculations
4M Adapt/Fcalc Win Ver. 12	All electromechanical installations in buildings
4M FLOW – WIN Ver. 6.2	All electromechanical installations in buildings
4M KENAK	Energy Calculations for buildings
Tyco "SPRINKCALC'	Sprinklers piping calculations
Carrier Duct Calculation	Duct calculations
Ti Soft Thermo CAD	Central Heating
Ti Soft Panel CAD	Electrical panels calculation and design
Ti Soft Pipe CAD	Piping calculations
Ti Soft Clima CAD	Air Conditioning Calculations
Philips Calculux Petridis 3F PHAETHON – HOURSOGLOU DIALUX LITE	Lighting Calculations
Victaulic Vic/Guide - Spec	Specifications
MONSANTO	Noise attenuation
MONOSI OBERON	Installation Program
PROTON - NOISE	Noise attenuation
PROTON - INTEL	Sound distribution
HIRSCHMANN	TV signal distribution
PROTON - MATV	TV signal distribution
PROTON - SPL	Sound field calculations
SMART	Acoustic measurements
MATLAB 5.0	Mathematical calculations
MATHCAD 7.0	Mathematical calculations
EASE Professional	Electro – Acoustic Simulator
EARS II	Electro – Acoustic Simulator

**b. Word Processing and Accountancy Packages**

<b>Software Package Name</b>	<b>Feature</b>
MS WORD for Windows 2007	Word Processing
MS EXCEL for Windows 2007	Spreadsheet
MS POWER Point for Windows 2007	Presentation
MS PROJECT 98 for WINDOWS	Management Program
SNGKBS by Singular	Accountancy Package
4M Adeia – Win	Engineers' Payment Calculation Package
Ti Soft Poleonomos	Engineers' Payment Calculation Package
Logiciel Procost	Engineers' Payment Calculation Package
Geniki logistiki Union	Accountancy Package
Misthodosia Union	Accountancy Package

**c. Design Packages**

The main design project is carried out through Autocad version 2010 Package by Autodesk. A number of electromechanical Calculation Packages are compatible with the AutoCAD package. Also compatible with the Autocad package is the program MECA v.6 and Victaulic Vic/Blocks suitable for electromechanical design.

A small amount of design work is carried out through MS Designer version 4.1 for Windows (including mainly the design work for presentations etc).

Design for building energy calculations is carried out through GCAD NG, a design package compatible with Intellicad.

**2. HARDWARE AND INSTRUMENTS**

The hardware equipment of the office includes:

**a. Computers**

An extended network (AutoCAD Users & Electromechanical Inst. Calculations) that includes:

- Intel(R) Core 2 DUO 2,33 GHz – 2048 MB RAM – HD 100 GB – LG Flatron 19" Screen
- Intel(R) Core 2 DUO 2,0 GHz – 2048 MB RAM – HD 80 GB – LG Flatron 19" Screen
- Pentium IV 2,4 GHz – 1024 MB RAM – HD 40 GB - LG Flatron 19" Screen
- Intel(R) Core 2 DUO 2,6 GHz – 2048 MB RAM – HD 40 GB – HP TCO 03 19" Screen
- Intel(R) Core 2 DUO 2,33 GHz – 2048 MB RAM – HD 100 GB – LG Flatron 19" Screen
- Intel(R) Core 2 DUO 2,6 GHz – 2048 MB RAM – HD 100 GB – LG Flatron 19" Screen
- Intel(R) Core 2 DUO 2,66 GHz – 1024 MB RAM – HD 80 GB – LG Flatron 19" Screen
- Intel(R) Core 2 DUO 2,33 GHz – 3072 MB RAM – HD 100 GB – LG LED 22" Screen
- AMD Athlon 2,2 GHz – 1024 MB RAM – HD 40GB– LG FLATRON 17" Screen

**b. Printers**



- XEROX Phaser 6121MFP
- OKI MICROLINE 3320
- HEWLETT PACKARD DESKJET 5550
- HEWLETT PACKARD LASERJET 2015 (2 τεμ.)
- SHARP AR-M 236 PCL6
- HEWLETT PACKARD BUSINESS INKJET 2800

**c. Plotters**

- HP Design jet 750C
- HP Design jet 1050C

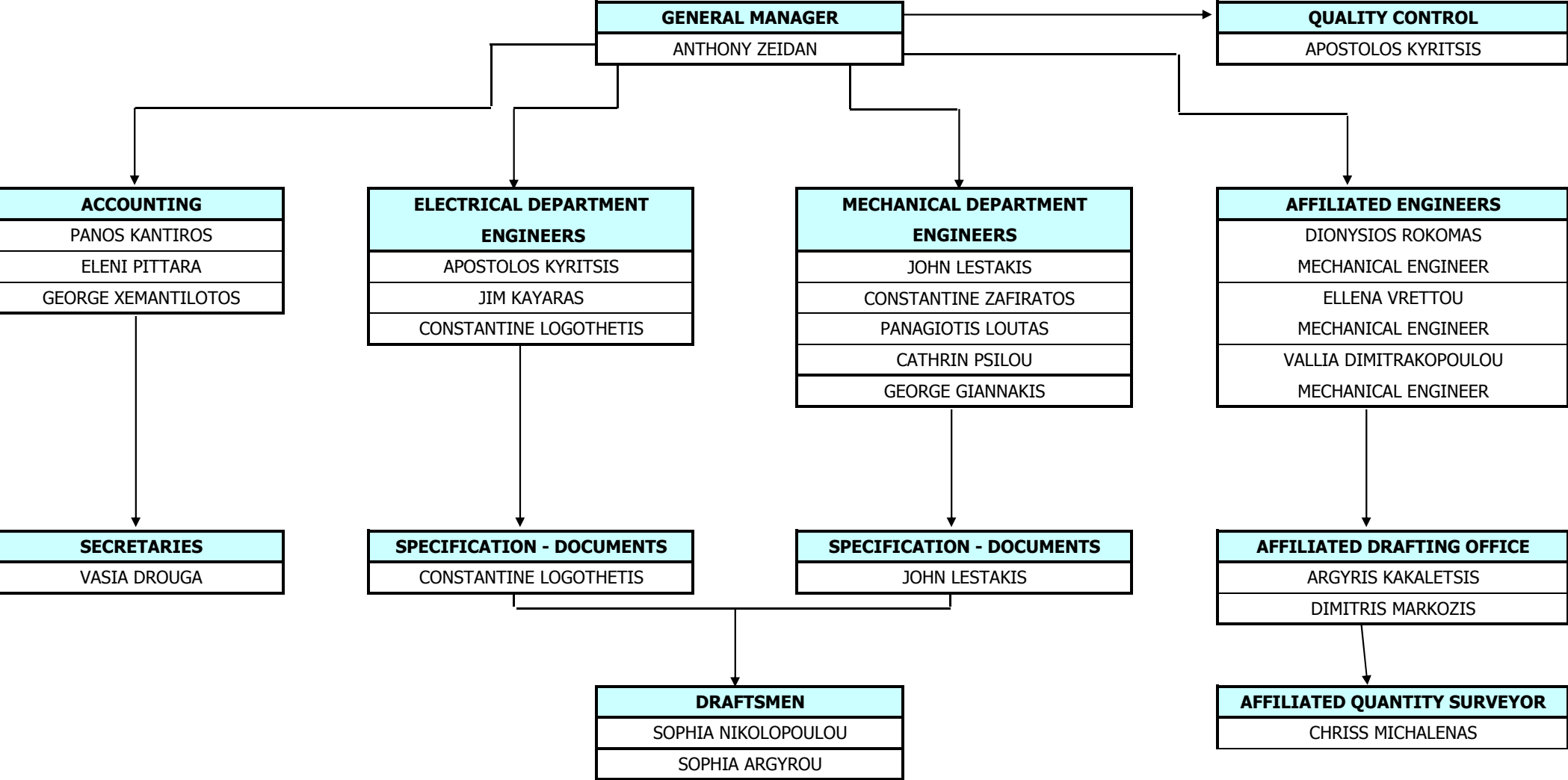
**d. Digitiser – scanner**

- HP Sketch Pro tablet
- HP Scanjet CII
- XEROX Phaser 6121MFP

**e. Measurement instruments**

1. Anemometer – Thermometer : KIMO LV 50
2. Electronic Thermometer : AMA – DIGIT AD 15M
3. Moisture – meter : POLYMER 5001

# COMPANY STRUCTURE



## **E. MAJOR PROJECTS**



N	DESCRIPTION OF PROJECT	CLIENT	BEGINNING	END	PROJECT BUDJET €	SUBJECT	PARTICIPATION PERCENTAGE
<b>AIRPORTS</b>							
1.	Airport Extension, Auxiliary Installations and landscaping of the State Airport of Chania "I. Daskalogiannis", Greece	CIVIL AVIATION AUTHORITY	2003	2009	24.370.634,00	Preliminary, Final, Construction Design & Tender Documents	100%



N	DESCRIPTION OF PROJECT	CLIENT	BEGINNING END	PROJECT BUDJET €	SUBJECT	PARTICIPATION PERCENTAGE
<b>AIRPORTS</b>						
1.	Extension and reform of the departure halls for the state Airport of Heraklion "N. Kazantzakis"	DUTY FREE SHOPS BETAPLAN	2013 2014	1,003,345,28	Construction Design & Tender Documents	100%



N	DESCRIPTION OF PROJECT	CLIENT	BEGINNING	END	PROJECT BUDJET €	SUBJECT	PARTICIP. PERCENT.
---	------------------------	--------	-----------	-----	---------------------	---------	-----------------------

### HOSPITALS

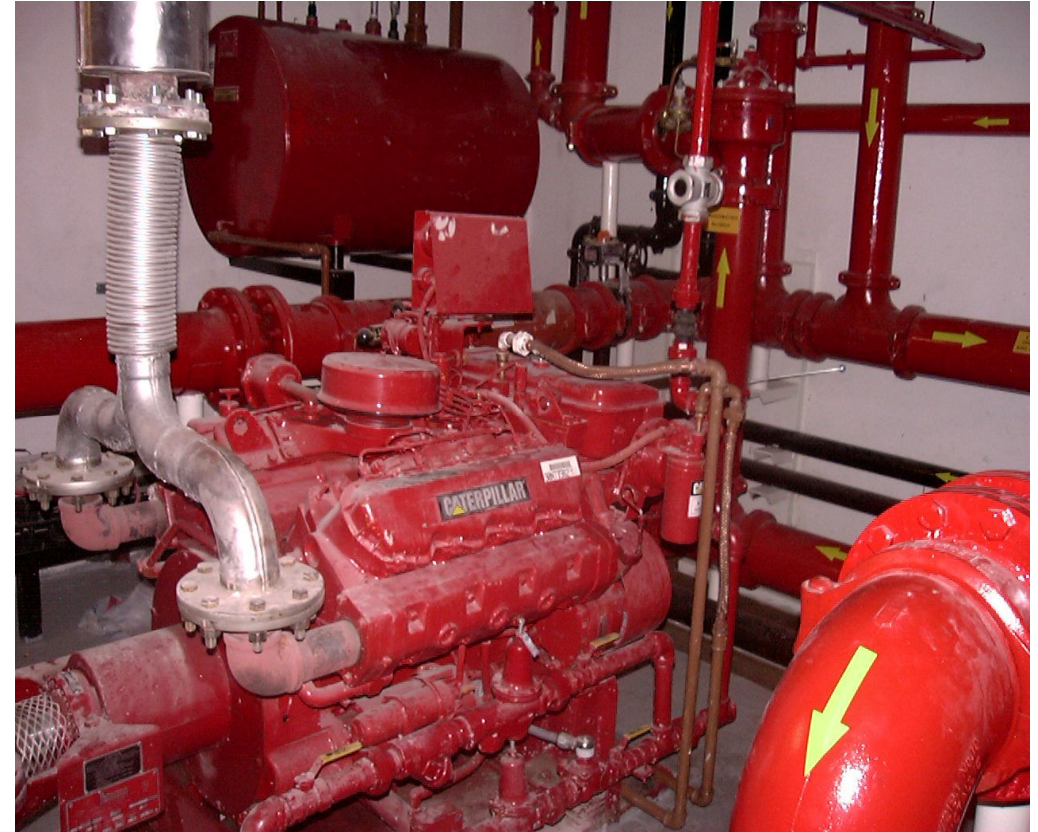
1.	Children Ogological Hospital Mariana V. Vardinogianni in Athens	Friends of Children With Cancer (ELPIDA)	2007	2010	6.568.253,14	Preliminary, Final, Construction Design and supervision	100%
----	---	---	------	------	--------------	---	------





N	DESCRIPTION OF PROJECT	CLIENT	BEGINNING END	PROJECT BUDJET €	SUBJECT	PARTICIPATION PERCENTAGE
<b>HOSPITALS</b>						
1.	Rehabilitation of Children Hospital of Athens "Agia Sofia"	GENER S.A. ERETBO S.A. DOMOTEXNIKH S.A.	2003 2004	2.568.140,00	Construction Design	100%





N	DESCRIPTION OF PROJECT	CLIENT	BEGINNING	END	PROJECT BUDJET €	SUBJECT	PARTICIPATION PERCENTAGE
<b>HYPERMARKETS – COMMERCIAL CENTERS</b>							
1.	CARREFOUR Hypermarket with 3 underground garages in Geraka Athens (48.000 m <sup>2</sup> Building)	CARREFOUR EDRACO	1998	2000	4.402.054,29	Construction Design - Supervision	100%





N	DESCRIPTION OF PROJECT	CLIENT	BEGINNING	END	PROJECT BUDJET €	SUBJECT	PARTICIPATION PERCENTAGE
<b>HYPERMARKETS – COMMERCIAL CENTERS</b>							
1.	CARREFOUR Hypermarket and commercial center in Patras (19.000 m <sup>2</sup> Building)	CARREFOUR CVZ	2001	2002	4.402.054,29	Construction Design - Supervision	100%



N	DESCRIPTION OF PROJECT	CLIENT	BEGINNING	END	PROJECT BUDJET €	SUBJECT	PARTICIPATION PERCENTAGE
<b>EDUCATIONAL BUILDINGS</b>							
1.	Electrical and Computers' Engineering Faculty Complex of Democritus University of Thrace - Phase A	TOKAT S.A.	2002	2005	1.614.086,57	Final & Construction Design	100%





N	DESCRIPTION OF PROJECT	CLIENT	BEGINNING	END	PROJECT BUDJET €	SUBJECT	PARTICIPATION PERCENTAGE
---	------------------------	--------	-----------	-----	------------------	---------	--------------------------

**EDUCATIONAL BUILDINGS**

1.	Civil Engineering Faculty Complex of Democritus University of Thrace - Phase A	Democritus University of Thrace	2008	2010	2.000.000,00	Construction Design & Tender Documents	100%
----	--	---------------------------------	------	------	--------------	--	------



N	DESCRIPTION OF PROJECT	CLIENT	BEGINNING	END	PROJECT BUDJET €	SUBJECT	PARTICIPATION PERCENTAGE
<b>OFFICE BUILDINGS</b>							
1.	Criminal Research Department Building of the Hellenic Police 32.000m <sup>2</sup> bldg.	KTISTOR ATE NESTOS ATE THEMELIODOMI S.A.	2002	2004	5.869.405,72	Final & Construction Design	100%





N	DESCRIPTION OF PROJECT	CLIENT	BEGINNING	END	PROJECT BUDJET €	SUBJECT	PARTICIPATION PERCENTAGE
---	------------------------	--------	-----------	-----	---------------------	---------	--------------------------

**OFFICE BUILDINGS**

1.	Hellenic National Meteorological Service (HNMS) Main Building, New Meteorological Radar Building in Aigina. Modernization of HNMS for the Olympic Games 2004	GENER S.A.- IFS HELLAS S.A.- GIGERTON S.A	2003	2004	1.280.000,00	Construction Design	100%
----	--	---	------	------	--------------	---------------------	------

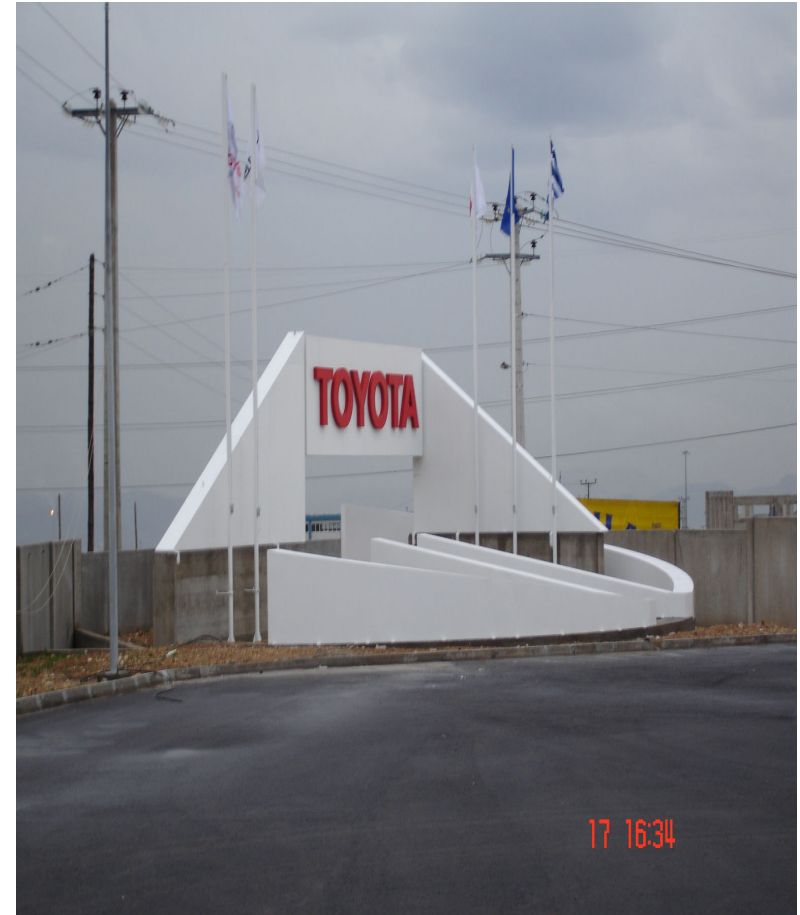


N	DESCRIPTION OF PROJECT	CLIENT	BEGINNING	END	PROJECT BUDJET €	SUBJECT	PARTICIPATION PERCENTAGE
---	------------------------	--------	-----------	-----	---------------------	---------	--------------------------

### OFFICE BUILDINGS

1.	Administration and Cultural Building – Prefecture of Laconia	G. PETRIS S.A.	2002	2005	1.614.086,57	Final design for bidding & Construction Design	100%
----	--	----------------	------	------	--------------	--	------





N	DESCRIPTION OF PROJECT	CLIENT	BEGINNING END	PROJECT BUDJET €	SUBJECT	PARTICIPATION PERCENTAGE
---	------------------------	--------	---------------	------------------	---------	--------------------------

**INDUSTRIAL BUILDINGS**

1.	Administration and Warehouse Facilities (Logistics) of TOYOTA (14.000 m <sup>2</sup> ) in Aspropyrgos.	PMS PISIMISIS AEBE SMART DEVELOPMENT S.A.	2004 2005	2.347.762,29	Final & Construction Design	100%
----	--	--	-----------	--------------	-----------------------------------	------

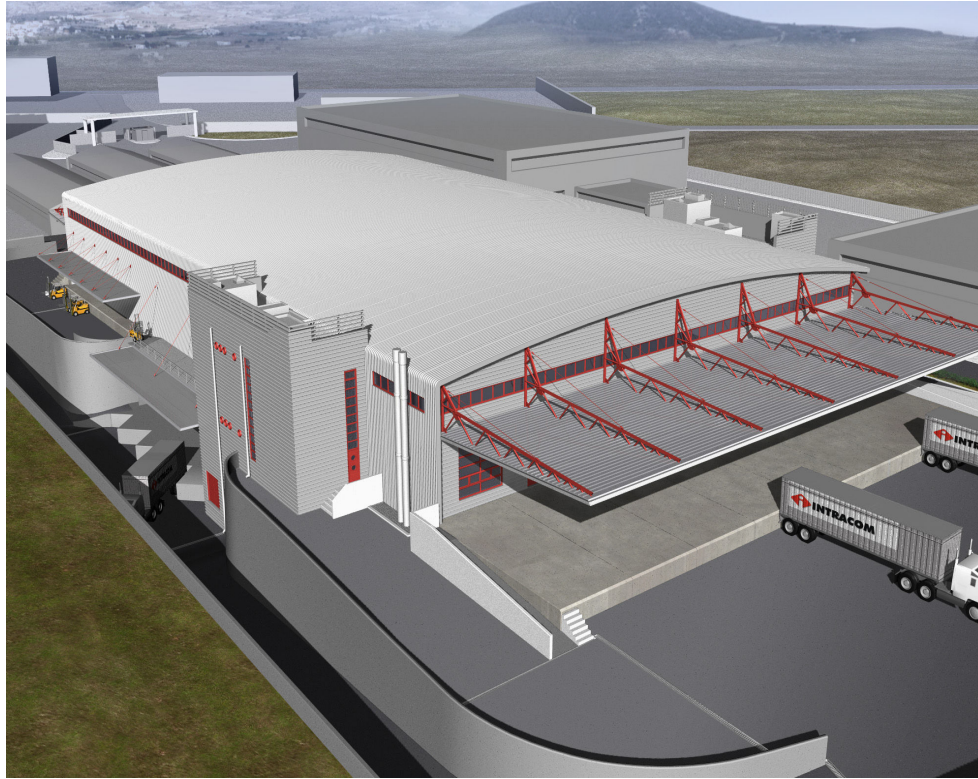


N	DESCRIPTION OF PROJECT	CLIENT	BEGINNING	END	PROJECT BUDJET €	SUBJECT	PARTICIPATION PERCENTAGE
---	------------------------	--------	-----------	-----	---------------------	---------	--------------------------

**INDUSTRIAL DESIGNS**

1.	BSB LTD New Building located at the 10 <sup>th</sup> km of National Road Athens-Lamia	BSB LTD	2006	2006	2.500.000,00	Construction Design	100%
----	---	---------	------	------	--------------	---------------------	------





N	DESCRIPTION OF PROJECT	CLIENT	BEGINNING	END	PROJECT BUDJET €	SUBJECT	PARTICIPATION PERCENTAGE
<b>INDUSTRIAL BUILDINGS</b>							
1.	Warehouse and office building of INTRACOM in Koropi Attica	INTRACOM S.A. DOMORINTHOΣ Ltd	2000	2000	1.173.881,14	Construction Design	100%



N	DESCRIPTION OF PROJECT	CLIENT	BEGINNING	END	PROJECT BUDJET €	SUBJECT	PARTICIPATION PERCENTAGE
<b>INDUSTRIAL BUILDINGS</b>							
1.	"SEMPO LOGISTICS BUILDING" at new Ikonio in Perama. 7500m <sup>2</sup> building for the transport and storage of COSCO merchandise at deck 2 of OLP.	PCDC SA	2013	2013	E/M Installations: 1.100.000,00 Refrigeration: 397,900,00	Construction Design	100%





N	DESCRIPTION OF PROJECT	CLIENT	BEGINNING	END	PROJECT BUDGET €	SUBJECT	PARTICIPATION PERCENTAGE
---	------------------------	--------	-----------	-----	---------------------	---------	--------------------------

### HOTELS

1.	"AMAN RESORT COMPLEX" in Sveti Stefan, Montenegro. Rehabilitation of the old hotel traditional buildings to an up-to-date seven star resort.	ADRIATIC PROPERTIES S.A.	2009	2011	21.000.000,00	Construction Design and supervision	100%
----	--	--------------------------	------	------	---------------	--	------



N	DESCRIPTION OF PROJECT	CLIENT	BEGINNING	END	PROJECT BUDJET €	SUBJECT	PARTICIPATION PERCENTAGE
---	------------------------	--------	-----------	-----	---------------------	---------	--------------------------

**HYPERMARKETS – COMMERCIAL CENTERS**

1.	CARREFOUR Hypermarket in TEG commercial center in Tirana, Albania	YAP Co – Carrefour Marinopoulos	2011	2012	2.000,000,00	Construction Design & Supervision	100%
----	---	---------------------------------	------	------	--------------	---	------





N	DESCRIPTION OF PROJECT	CLIENT	BEGINNING	END	PROJECT BUDJET €	SUBJECT	PARTICIPATION PERCENTAGE
<b>HYPERMARKETS – COMMERCIAL CENTERS</b>							
1.	CARREFOUR Hypermarket in SABA commercial center in Tehran Iran.	YAP Co	2013	2014	3.000,000,00	Construction Design	100%



N	DESCRIPTION OF PROJECT	CLIENT	BEGINNING	END	PROJECT BUDJET €	SUBJECT	PARTICIPATION PERCENTAGE
<b>HYPERMARKETS – COMMERCIAL CENTERS</b>							
1.	CARREFOUR Hypermarket ERAM 5 in Tehran Iran	CVZ HELLAS Ltd	2007	2009	800,000,00	Design Consulting services	100%



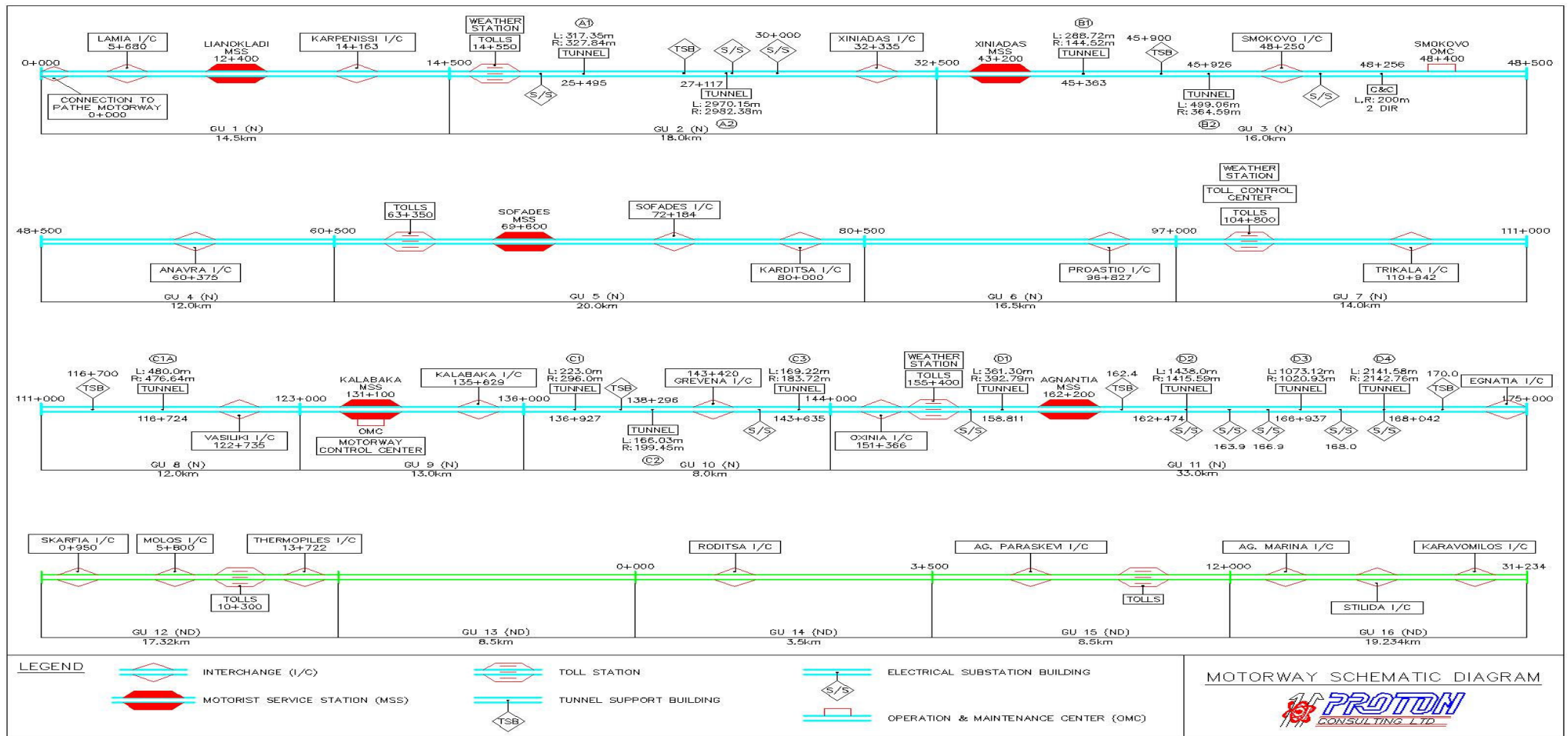


N	DESCRIPTION OF PROJECT	CLIENT	BEGINNING	END	PROJECT BUDJET €	SUBJECT	PARTICIPATION PERCENTAGE
<b>HYPERMARKETS – COMMERCIAL CENTERS</b>							
1.	Conversion from hotel building to a commercial store FNAC at Lazarakis and S. Karagiorga streets in Glyfada.	EXONI S.A. - CVZ HELLAS Ltd	2007	2008	800,000,00	Construction Design & Supervision	100%



N	DESCRIPTION OF PROJECT	CLIENT	BEGINNING	END	PROJECT BUDGET €	SUBJECT	PARTICIPATION PERCENTAGE
<b>HYPERMARKETS – COMMERCIAL CENTERS</b>							
1.	Rehabilitation of FNAC store Mitropoleos 80, Athens	CVZ HELLAS Ltd	2007	2008	800,000,00	Construction Design & Supervision	100%

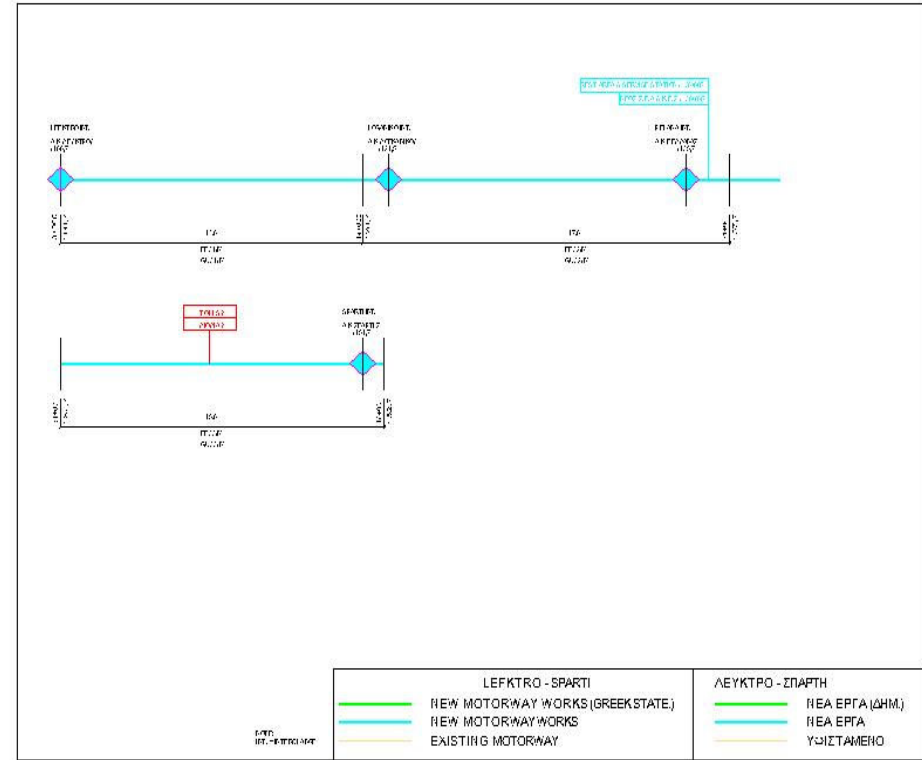
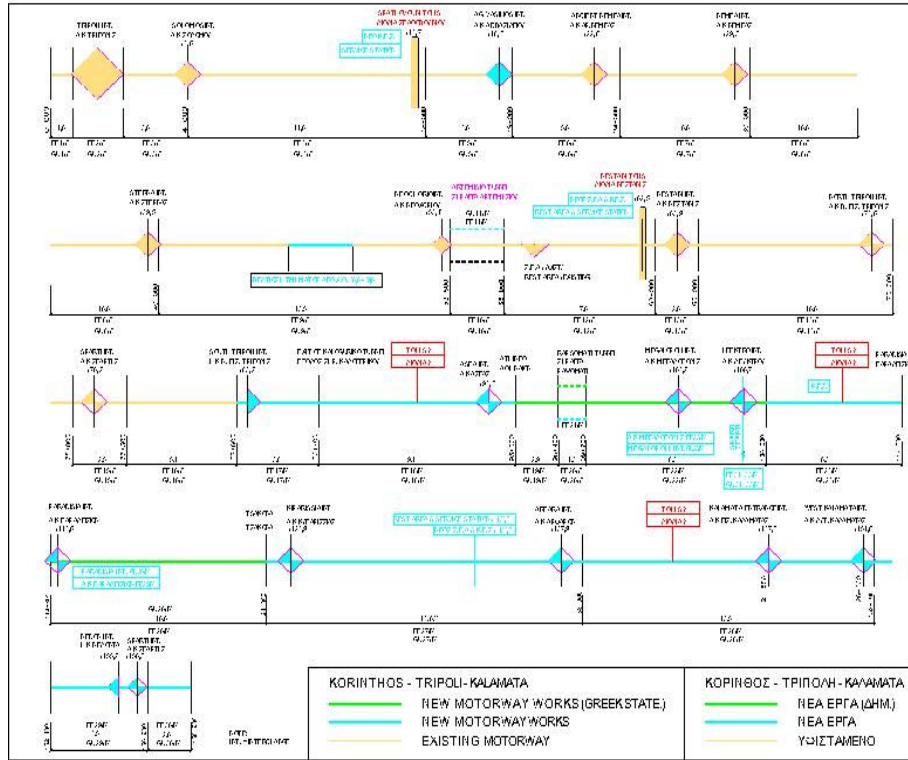




N	DESCRIPTION OF PROJECT	CLIENT	BEGINNING END	PROJECT BUDJET €	SUBJECT	PARTICIPATION PERCENTAGE
---	------------------------	--------	---------------	------------------	---------	--------------------------

**ROAD LIGHTING – IRRIGATION – TOLL STATIONS - TUNNELS**

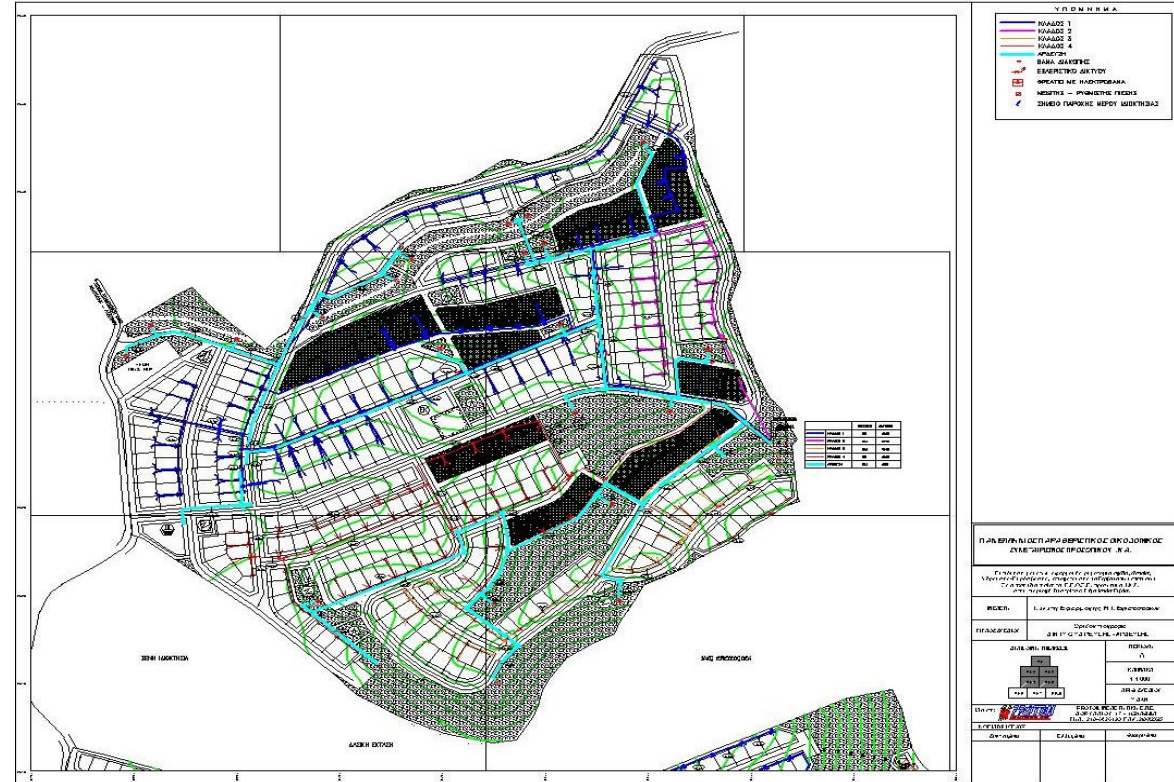
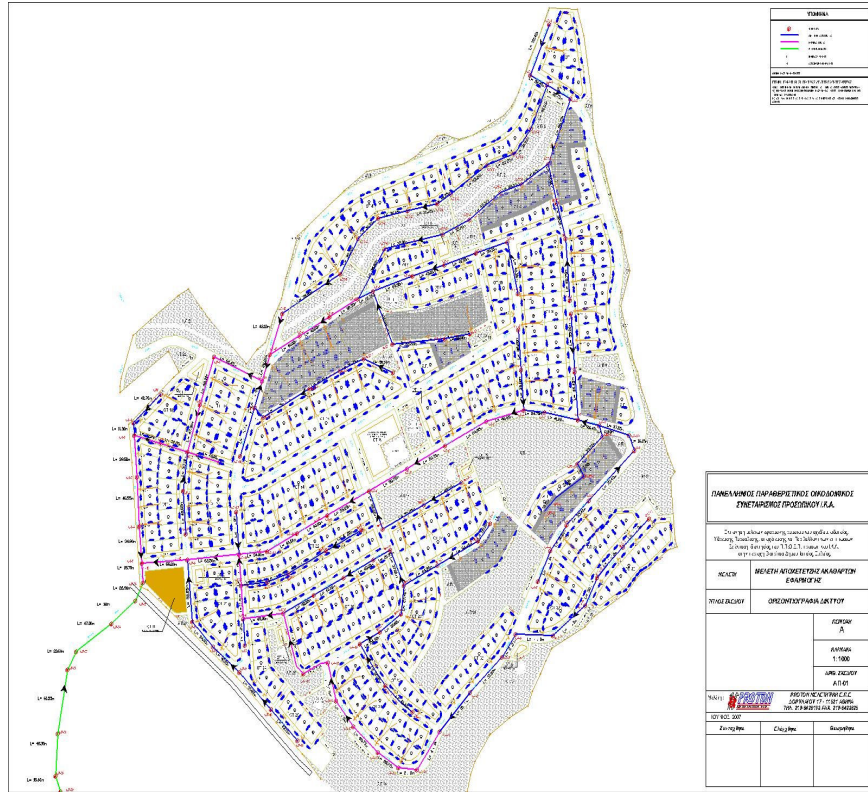
1.	Design – Construction – Financing – Operation – Maintenance And Exploitation Of The Central Greece (E65) Motorway	ELLINIKES DIADROMES SOMAGUE, FCC, SACYR, ATTI - KAT S.A., PROODEFTIKI S.A.	2006 2006	100.000.000,00	Advanced Preliminary Design	100%
----	---	--	-----------	----------------	-----------------------------	------



N	DESCRIPTION OF PROJECT	CLIENT	BEGINNING END	PROJECT BUDGET €	SUBJECT	PARTICIPATION PERCENTAGE
---	------------------------	--------	---------------	------------------	---------	--------------------------

**ROAD LIGHTING – IRRIGATION – TOLL STATIONS - TUNNELS**

1.	Design – Construction – Financing – Operation – Maintenance And Exploitation Of The Motorway Korinthos – Tripoli – Kalamata Motorway And Lefktro – Sparti Branch	ELLINIKES DIADROMES SOMAGUE, FCC, SACYR, ATTI - KAT S.A., PROODEFTIKI S.A.	2005 2006	80.000.000,00	Advanced Preliminary Design	100%
----	--	--	-----------	---------------	-----------------------------	------

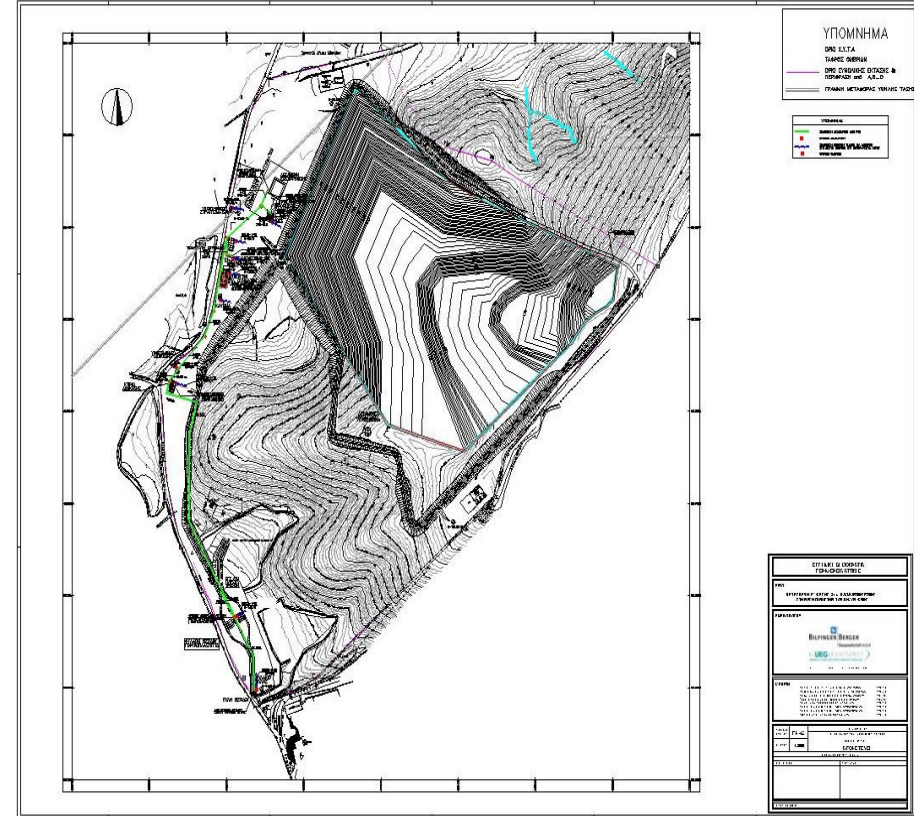


N	DESCRIPTION OF PROJECT	CLIENT	BEGINNING	END	PROJECT BUDJET €	SUBJECT	PARTICIPATION PERCENTAGE
---	------------------------	--------	-----------	-----	------------------	---------	--------------------------

**INFRASTRUCTURE**

1.	M/E INFRASTRUCTURE of 3 sites in Istiaia, Evia	CONSTRUCTION COOPERATIVE OF IKA STAFF	2007	2008	3.500.000,00	Construction Design	100%
----	--	---------------------------------------	------	------	--------------	---------------------	------





N	DESCRIPTION OF PROJECT	CLIENT	BEGINNING	END	PROJECT BUDJET €	SUBJECT	PARTICIPATION PERCENTAGE
---	------------------------	--------	-----------	-----	------------------	---------	--------------------------

**SOLID WASTES DISPOSAL LANDFILL SITE**

1.	"Phase A construction of 2nd Solid Wastes Disposal Landfill Site in Western Attica at location Scalistiri in the Municipality of Phylis"	BILFINGER BERGER BAUGESELLSCHAFTm.b.H. – UEG AG	2005	2005	6.419.000,00	Final Design for bidding	100%
----	--	---	------	------	--------------	--------------------------	------



No	DESCRIPTION OF PROJECT	USE	CLIENT	YEAR	HEATED AREA (m <sup>2</sup> )	PARTICIPATION PERCENTAGE
<b>ENERGY INSPECTIONS AND ISSUE OF ENERGY CERTIFICATES</b>						
1.	Commercial Center Mediterranean Cosmos at Pylaia, Salonica	Commercial center	PYLLAIA S.A.	2012	51.499.15	100%



No	DESCRIPTION OF PROJECT	USE	CLIENT	YEAR	HEATED AREA (m <sup>2</sup> )	PARTICIPATION PERCENTAGE
----	------------------------	-----	--------	------	-------------------------------	--------------------------

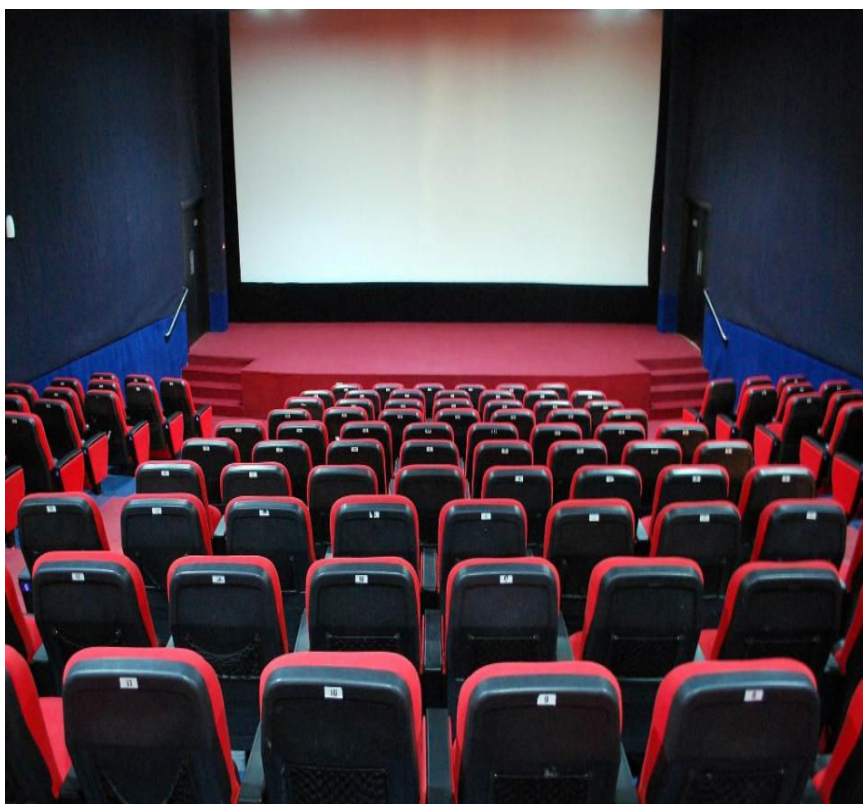
<b>ENERGY INCEPTIONS AND ISSUE OF ENERGY CERTIFICATES</b>						
---	--	--	--	--	--	--

1.	Offices building "THE CECIL" at Kifissia, Attica	Offices	LAMDA PRIME PROPERTIES	2012	6.064.22	100%
----	--	---------	------------------------	------	----------	------



No	DESCRIPTION OF PROJECT	USE	CLIENT	YEAR	HEATED AREA (m <sup>2</sup> )	PARTICIPATION PERCENTAGE
<b>ENERGY INSPECTIONS AND ISSUE OF ENERGY CERTIFICATES</b>						
1.	Hypermarket Carrefour at New Eukarpia in Salonika	Hypermarket	CARREFOUR ΜΑΡΙΝΟΠΟΥΛΟΣ S.A.	2012	20.323.64	100%





No	DESCRIPTION OF PROJECT	USE	CLIENT	YEAR	HEATED AREA (m <sup>2</sup> )	PARTICIPATION PERCENTAGE
----	------------------------	-----	--------	------	-------------------------------	--------------------------

**ENERGY INCEPTIONS AND ENERGY ISSUE CERTIFICATES**

1.	Cinemas Center in the commercial center of Carrefour Thessalia in Larissa	Cinemas	KLEPIERRE LARISSA REAL ESTATE LTD	2013	5.075.12	100%
----	---	---------	-----------------------------------	------	----------	------



No	DESCRIPTION OF PROJECT	USE	CLIENT	YEAR	HEATED AREA (m <sup>2</sup> )	PARTICIPATION PERCENTAGE
<b>ENERGY INSPECTIONS AND ISSUE OF ENERGY CERTIFICATES</b>						
1.	Shops in the commercial center of Carrefour Perivolos in Patra	Commercial center (Shops)	KLEPIERRE PERIVOLA PATRAS S.A.	2012 -2016	6.083.31	100%

## F. TABLE OF ELECTROMECHANICAL PROJECTS DESIGNED BY “PROTON CONSULTING ENGINEERS L.t.d “ OR ITS MEMBERS

### OFFICE BUILDINGS

No	DESCRIPTION OF PROJECT	CLIENT	BEGINNING	END	PROJECT BUDGET EURO	SUBJECT	PARTICIPATION PERCENTAGE
1	Headquarters Heidelberg W.Germany	U.S. ARMY Corp of Engineers	1977	1978	190.755,68	Construction Design	100%
2	Headquarters and Computer Centre Catania ITALY	U.S. ARMY Corp of Engineers	1978	1979	117.388,11	Construction Design	100%
3	P. GIABANAS Office buildings with commercial space and basements Halandri	P. GIABANAS	1989	1989	132.061,62	Construction Design	100%
4	M. KONSTADINIDIS 3-storey office building Agia Paraskevi	M. KONSTADINIDIS	1989	1989	102.714,60	Construction Design	100%
5	EMBIOM S.A., Office building Marousi	EMBIOM S.A	1990	1990	586.940,57	Construction Design	35%
6	CONESTA TEHNIKI S.A., Office building Faliro	CONESTA TEHNIKI S.A.	1990	1990	440.205,42	Construction Design	35%
7	E. STAVROU, 6-storey office, store, residence building	E. STAVROU	1990	1990	176.082,17	Construction Design	100%
8	RILKEN FACTORY Office building, with restaurant and multi purposes space Lykovrisi Kifisia	RILKEN S.A.	1993	1994	484.225,97	Construction Design & Supervision	100%
9	EDRASI H. PSALIDAS Office building in Koropi - Attica	EDRASI H. PSALIDAS S.A.	1994	1996	528.246,52	Construction Design & Supervision	100%
10	Geotechnical Institute office and Laboratories bldg in Preveza	LAMBROU	1996	1997	586.940,57	Final Design	100%
11	National Statistics Services of Greece office building in Piraeus street	KORONTZIS S.A.	1996	1996	3.521.643,43	Final Design for Bidding	50%
12	High Rise office building in Piraeus 32.000 m <sup>2</sup>	AEGEK S.A.	1997	1997	5.869.405,72	Final Design for Bidding	100%
13	KED - Seven floors store office building of OGA with 3 underground garages (240 cars) Thivon avenue	KTISTOR ATE NESTOS ATE	2001	2001	5.869.405,72	Final Design for Bidding	50%
14	Building of Ministry of Employment and Social Provision with 3 underground garages (365 cars) of KED	KTISTOR ATE NESTOS ATE	2001	2001	5.869.405,72	Final Design for Bidding	100%
15	New office area and multiple purpose hall of FORTHNET	FORTHNET	2001	2001	234.776,22	Construction Design	100%
16	Criminal Research Department Building of the Hellenic Police 30.000m <sup>2</sup> bldg.	KTISTOR ATE NESTOS ATE THEMELIODOMI S.A.	2002	2004	5.869.405,72	Final Design for Bidding & Construction Design	100%
17	KED Building of Ministry of Development with 3 underground Garages ( 635 cars)	ATTIKAT S.A.	2002	2002	5.869.405,72	Design for Bidding	100%
18	Office and stores building of Educational Institution KOURTESI and residence building in Halandri - Attica	HELMOS ATE	2003	2003	880.410,85	Final & Construction Design	100%
19	General Offices of the Gas Supply Company of Attica.	GAS SUPPLY COMPANY OF ATTICA S.A.	2003	2004	500.000,00	Construction Design	100%
20	Hellenic National Meteorological Service (HNMS) Main Building New Meteorological Radar Building in Aigina. Modernization of HNMS for the Olympic Games 2004	GENER S.A.- IFS HELLAS S.A.- GIGERTON S.A	2003	2004	1.280.000,00	Construction Design	100%
21	Building extension for the inclusion of Interpol services in the Hellenic Police Headquarters	KTISTOR ATE	2004	2004	280.000,00	Construction Design	100%
22	Erection of multistory building in Kallithea (10 Evripidou Str.)	KPPS	2005	2005	300.000,00	Construction Design	100%
23	New 6 story office building with appartments and Amphitheatre in 1 Panathineon Street, Patissia, Athens for the"House of the Actor" Institution	"House of the Actor" Institution	2005	2005	160.000,00	Construction Design	100%



**OFFICE BUILDINGS**

<b>No</b>	<b>DESCRIPTION OF PROJECT</b>	<b>CLIENT</b>	<b>BEGINNING</b>	<b>END</b>	<b>PROJECT BUDGET EURO</b>	<b>SUBJECT</b>	<b>PARTICIPATION PERCENTAGE</b>
<b>24</b>	Repair and Restoration of the preserved building "NEON" ON Dorou street, Omonia square, Athens	Alexandria Shipping Company	2006	2008	275.000,00	Construction Design & Supervision	100%
<b>25</b>	Offices, stores and appartments complex with 5 levels basement garage in Hania, Crete	AKTER ATE	2007	2007	1.200.000,00	Construction Design	100%
<b>26</b>	Canadian Embassy building in Athens. HVAC installation	CANADIAN EMBASY	2007	2007	200.000,00	Construction Design & Supervision	100%
<b>27</b>	New 3 story building for offices and stores of Thermovent in Athens	THERMOVENT HELLAS. - KPPS	2003	2004	500.000,00	Final & Construction Design	100%

**EDUCATIONAL BUILDINGS**

No	DESCRIPTION OF PROJECT	CLIENT	BEGINNING	END	PROJECT BUDJET EURO	SUBJECT	PARTICIPATION PERCENTAGE
1	Flight Simulator Building Manheim - W.Germany	U.S. ARMY Corp of Engineers	1977	1978	73.367,57		100%
2	Artificial Moving target Building Baumholder W. Germany	U.S. ARMY Corp of Engineers	1977	1978	73.367,57		100%
3	Ramstein High School W. Germany	U.S. ARMY Corp of Engineers	1979	1979	645.634,62	Construction Design	100%
4	Primary School Insirlic Turkey	U.S. ARMY Corp of Engineers	1982	1982	381.511,37	Construction Design	100%
5	OAED SCHOOL Galatsi	OAED	1988	1989	234.776,22	Construction Design	35%
6	Technical High School Aliberi	Municipality of Halkida	1989	1989	1.320.616,28	Construction Design	35%
7	UNIVERSITY OF CRETE seminars and Library Building	UNIVERSITY OF CRETE	1991	1992	440.205,42	Construction Design	35%
8	Student Camp Kalamata (300 beds)	Municipality of Kalamata	1991	1992	1.760.821,70	Construction Design	35%
9	UNIVERCITY OF HERAKLION Buildings of Chemistry, Computers, Mathematics, Administration	AVAX-GNOMON- I. KORONTZIS-KATSARAKIS	1997	1997	5.869.405,72	Final Design	50%
10	2 <sup>nd</sup> primary school in Tripoli	Arcadia Prefecture	1986	1987	278.796,77	Construction Design	35%
11	4 <sup>nd</sup> primary school in Arta	LAMBROU	1996	1996	880.410,85	Final Design for Bidding	100%
12	Technical school in Arta	LAMBROU	1996	1996	457.813,64	Final Design for Bidding	100%
13	OAED building in Tripolis	KTISTOR ATE	1997	1998	1.173.881,14	Final Design for Bidding	100%
14	2 <sup>nd</sup> Primary School of Kamatero	ATTIKI DIODOS	1998	1998	352.164,34	Final Design for Bidding	100%
15	3 <sup>rd</sup> Kindergarden in Kalyvia Attika.	ATTIKI DIODOS	1998	1998	117.388,11	Final Design for Bidding	100%
16	3 <sup>rd</sup> Primary School in Kalyvia Attika.	ATTIKI DIODOS	1998	1998	440.205,42	Final Design for Bidding	100%
17	Design and Construction of educational building T.E.I. in Creta	EVROS S.A.	2001	2001	880.410,85	Final Design for Bidding	100%
18	Electrical and Computers' Engineering Faculty Complex of Democritus University of Thrace - Phase A	TOKAT S.A.	2002	2005	1.614.086,57	Final Design for Bidding & Construction Design	100%
19	Building of Police School in Naoussa	KOKKINOS S.A.	2002	2002	1.320.616,28	Final Design for Bidding	100%
20	Civil Engineering Faculty Ferroconcrete Laboratory Building of University Dimocritio University of Thraki	MEKON S.A.	2002	2003	475.820,00	Construction Design	50%
21	New Builling of Natural Science with Lecture Theatre and Laboratories in ARSAKEIO of Patras	FILEKPAIDEYTIKH COMPANY	2006	2006	800.000,00	Construction Design	50%
22	Restoration of the students House in Sparti	NATIONAL YOUTH INSTITUTION	2005	2006	2.089.329,00	Construction Design	100%
23	Civil Engineering Faculty Complex of Democritus University of Thrace - Phase A	Democritus University of Thrace	2008	2010	2.000.000,00	Construction Design	100%
24	Electrical and Computers' Engineering Faculty Complex of National Technical University of Athens	KLEMAT S.A.	2005	2005	1.500.000,00	Final Design for Bidding	100%
25	Rehabilitation of existing building and addition of 10 school classes in the 3rd and 6th Primary School of Petroupolis, Attika	KALLITEHNOS S.A.	2007	2009	599.778,15	Final & Construction Design	100%
26	Design, financing, construction and technical management of 1 scholar units for the region of central Macedonia	J & P – AVAX S.A.	2012	2012	15.000.000,00	Final Design for Bidding	100%

**EDUCATIONAL BUILDINGS**

<b>No</b>	<b>DESCRIPTION OF PROJECT</b>	<b>CLIENT</b>	<b>BEGINNING</b>	<b>END</b>	<b>PROJECT BUDGET EURO</b>	<b>SUBJECT</b>	<b>PARTICIPATION PERCENTAGE</b>
27	Rehabilitation of OTE ESTATE office building and change of use to a university educational building in Kipseli, Athens	ATHENS UNIVERSITY OF ECONOMICS & BUSINESS	2014	2015	1.650.000.000,00	Consulting services for the design and construction of the electromechanical installations	100%



**HOSPITALS**

No	DESCRIPTION OF PROJECT	CLIENT	BEGINNING	END	PROJECT BUDJET EURO	SUBJECT	PARTICIPATION PERCENTAGE
1	Rehabilitation of Medical and Dental Clinics W. Germany	U.S. ARMY Corp of Engineers	1975	1976	234.776,22	Construction Design	100%
2	DEPANOM in cooperation with PHILIPP HOLZMANN AG University Hospital (600 beds) Heraklion Crete	TH. PAPAYANNIS & PRTNS	1982	1986	5.869.405,72	Construction Design	30%
3	DEPANOM in cooperation with PHILIPP HOLZMANN AG University Hospital (700 beds) Ioannina	TH. PAPAYANNIS & PRTNS	1982	1986	5.282.465,15	Construction Design	30%
4	Medical Research Centre University of Jedha S. Arabia	BENSPO	1984	1985	5.869.405,72	Construction Design	15%
5	Sanitarium Ag. Olga	Sanitarium Ag. Olga	1989	1990	308.143,80	Construction Design	50%
6	IKA EYOSMOS Thessaloniki	POLYTECHNIKA S.A.	1989	1990	1.320.616,28	Construction Design	50%
7	General County Hospital (300 beds) Rodos	TH. PAPAYANNIS & PRTNS	1990	1990	5.869.405,72	Final Design	30%
8	Polydynamic Hospital of Athens	JB - TEV VIOTER TECHNICAL UNION.	1992	1992	17.608.217,16	Final Design	20%
9	DEPANOM General Hospital (400 beds) Chania Crete	TH. PAPAYANNIS & PRTNS	1994	1994	14.673.514,30	Final Design	30%
10	DEPANOM General Hospital (300 beds) Serres	DEPANOM S.A.	1995	1997	5.869.405,72	Preliminary Design for Bidding	50%
11	DEPANOM General Hospital (320 beds) Katerini	DEPANOM S.A.	1995	1997	5.869.405,72	Preliminary Design for Bidding	50%
12	General Hospital Corfu (300 beds)	ERGAS S.A.	1996	1997	5.869.405,72	Final & Construction Design	50%
13	General Hospital in NAOUSA New operating theatres - HVAC	NAOUSA HOSPITAL	1995	1995	1.760.821,71	Construction Design	50%
14	IKA Chania in Creta	KAPETANIDI BR. S.A.	1997	1998	1.173.881,14	Final Design for Bidding	100%
15	IKA Main Building Piraeus street – Athens	CONSTRUCTION GROUP S.A.	1999	1999	2.347.762,28	Final Design for Bidding	100%
16	HVAC – Institution for poor and incurable «House of church» in Kalamata	INSTITUTION FOR POOR AND INCURABLE	1999	2000	293.470,28	Construction Design	100%
17	DEPANOM General Hospital (274 beds) in Agrinio	DEPANOM S.A.	2001	2002	4.402.054,29	Preliminary Design for Bidding	100%
18	IKA AIGIO	LYKODIMOS S.A.	2002	2002	777.696,25	Final Design for Bidding	100%
19	IKA TRIPOLI	EUDROMOS S.A.	2002	2002	909.757,88	Final Design for Bidding	100%
20	IKA PAGRATI ATHENS	LYKODIMOS S.A.	2002	2002	1.291.269,25	Final Design for Bidding	100%
21	Rehabilitation and Extension of "Mitera" lying – in Hospital	MITERA S.A.	2002	2003	4.402.054,29	Preliminary & Final Design	100%
22	Rehabilitation of Children Hospital of Athens "Aghia Sofia"	GENER S.A. ERETBO S.A. DOMOTEXNIKH S.A.	2003	2004	2.568.140,00	Construction Design	100%
23	Rehabilitaion of 2 Hostels for disable persons in the Institution PIKPA in Voula, Athens	KPPS S.A.	2003	2004	51.550,00	Construction Design	100%

**HOSPITALS**

No	DESCRIPTION OF PROJECT	CLIENT	BEGINNING	END	PROJECT BUDGET EURO	SUBJECT	PARTICIPATION PERCENTAGE
24	Rehabilitaion of the ground floor in the institution KEPEP in Karditsa	KPPS S.A.	2004	2005	264.122,97	Construction Design	100%
25	Rehabilitation and extension of the Emergency Department and the Renal Analysis Unit at Elefsina (Thriassio) General Hospital	GENER S.A.	2004	2004	600.000,00	Construction Design	100%
26	Survey of electrical installations – KAT Hospital	KAT Hospital	2004	2004	3.000.000,00	Survey of electrical installations	100%
27	Completion and extension of Adults Psychiatric Department and creation of Adolescents Psychiatric Department at General Hospital “SISMANOGLEIO”	ELERGO TEHNIKI S.A.	2008	2008	800.000,00	Construction Design	100%
28	Changes in the electrical installations of the two children Hospitals, Aghia Sofia and Aglaia Kyriakou in Athens for the use of wheeled apparatus for reheat and distribution of food	XENEX S.A.	2005	2005	200.000,00	Electrical Installations Construction Design	100%
29	Design and construction of Holargos Municipality clinics building in 6 Agamemnon street, Holargos, Athens	EUDROMOS S.A.	2005	2005	550.000,00	Final Design for Bidding	100%
30	Refurbishment of 6th and 4th floors and part of 3rd floor of the central building in the Children General Hospital of Athens Aghia Sofia	DEPANOM S.A.	2005	2006	960.000,00	Construction Design	100%
31	Creation of Emergency Department at General Hospital in Filiates Igoumenitsa	TEHNIKI S.A.	2006	2008	1.800.000,00	Final Design for Bidding & Construction Design	100%
32	Dr V. Athanassiou Artificial Impregnation center in Amaroussion Attica	V. ATHANASIOU	2006	2006	120.000,00	Construction Design	100%
33	Embryological creation center in Halandri Attica	BALLIAN TECHNICAL COMPANY S.A. Embryological creation Ltd	2006	2007	800.000,00	Construction Design	100%
34	Refurbishment of the ground floor daily hospitalization unit in the Aretaion Hospital in Athens	A. Varoutsas (Civil Engineer) (with the financing of Metaxas family)	2006	2006	150.000,00	Construction Design	100%
35	Recuperation center of patients closed hospitalization of T. Siamos company in Panaitolion Greece	VERITEK S.A.	2006	2008	1.500.000,00	Construction Design	100%
36	Design and construction of urban type health center in Peristeri, Attika	ELLISDON CONSTRUCTION S.A. - KEPAMOS S.A.	2006	2007	1.200.000,00	Construction Design	100%
37	Children Ogological Hospital Mariana V. Vardinogianni in Athens	Friends of Children With Cancer (ELPIDA)	2007	2008	6.568.253,00	Preliminary, Final, Construction Design and supervision	100%
38	Refurbishment and change of use of existing five store building (located at Aghios Sostis Athens) to Renal Analysis unit.	ARITI S.A.	2007	2009	640.000,00	Preliminary, Final, Construction Design and supervision	100%
39	Refurbishment and change of use of existing three store building (located at Halandri Athens) to Renal Analysis unit.	ARITI S.A.	2007	2009	580.000,00	Preliminary, Final, Construction Design and supervision	100%
40	Installations of pedagogical center of children Hospital Aglaia Kyriakou in Syggrou str., Athens	Children Hospital Aglaia Kyriakou	2007	2009	120.000,00	Construction Design	100%
41	Rehabilitation of Andreas Siggros Hospital Museum	Hellenic Dermatology Company	2007	2009	120.000,00	Construction Design	100%

**HOSPITALS**

No	DESCRIPTION OF PROJECT	CLIENT	BEGINNING	END	PROJECT BUDGET EURO	SUBJECT	PARTICIPATION PERCENTAGE
42	Rehabilitation and extension of regional general hospital – health center in Filiates, Igoumenitsa	TEHNIKI S.A. VERITEK S.A.	2009	2009	5.000.000,00	Construction Design	100%
43	New contractual works for the completion of the Electromechanical installations of the General Prefectional Hospital In Katerini, Greece	INTRACAT S.A.	2008	2008	750.000,00	Construction Design	50%
44	New contractual works for the completion of the Electromechanical installations of the General Prefectional Hospital In Corfu, Greece	ELTER S.A.	2008	2008	750.000,00	Construction Design	50%
45	Addition of 2 floors above the surgery section of the General Navy Hospital in Athens	EUDROMOS S.A.	2009	2009	1.200.000,00	Final Design for Bidding	100%
46	Survey of mechanical installations – KAT Hospital	KAT Hospital	2009	2009	-	Survey of mechanical installations	100%
47	Renewal of the HVAC system and the electrical network of the daily Hospitalization Unit in the Children General Hospital "Aghia Sofia" in Athens	GENERAL HOSPITAL FOR CHILDREN "Aghia SOFIA"	2011	2011	150.000,00	Construction Design	100%
48	Rehabilitation part of the second floor of the main building for the creation of cardiology department, Haemodynamic unit, stress test and ultrasound laboratories at the Piraeus General Hospital "Tzanio".	Piraeus General Hospital "TZANEIO" - VERITEK A.T.E.E.	2011	2011	450.000,00	Construction Design	100%
49	General Psychiatric Clinic and secondary operation in Asklipiyon General Hospital, Athens	Asklipiyon General Hospital	2013	2013	222.643,34	Construction Design	100%
50	Aretaiyon Hospital - Daily Hospitalization Unit	Aretaiyon Hospital	2009	2009	100.000,00	Construction Design	100%
51	IKA of Ptolemaida, Greece	Social Insurance Institution (IKA)	2011	2011	2.000.000,00	Final Design	100%
52	Rehabilitation of the Intensive Care Unit at the Children Hospital of Athens "Aghia Sofia"	Floga Society (with the financing of Stavros Niarchos Foundation)	2011	2013	174.575,63	Construction Design and supervision	100%



**BANKS**

No	DESCRIPTION OF PROJECT	CLIENT	BEGINNING	END	PROJECT BUDGET EURO	SUBJECT	PARTICIPATION PERCENTAGE
1	AGRICULTURAL BANK OF GREECE Prevesa	TEMIK S.A.	1987	1987	234.776,22	Final Design for Bidding	100%
2	Royal Bank of Scotland Piraeus	HANSCOMB	1989	1990	469.552,45	Supervision & Financial Management	100%
3	Aspis Bank in Veria	TH. PAPAYANNIS & PRTNS	2001	2001	80.410,85	Construction Design	100%
4	Aspis Bank In Hania Crete	TH. PAPAYANNIS & PRTNS	2001	2001	83.052,09	Construction Design	100%
5	Aspis Bank in Halkis	TH. PAPAYANNIS & PRTNS	2001	2001	98.899,48	Construction Design	100%
6	Aspis Bank in N.Philadelphia Attica	TH. PAPAYANNIS & PRTNS	2001	2001	104.768,89	Construction Design	100%
7	Aspis Bank in Lamia	TH. PAPAYANNIS & PRTNS	2002	2002	94.203,96	Construction Design	100%
8	Aspis Bank in Drama	TH. PAPAYANNIS & PRTNS	2002	2002	88.921,49	Construction Design	100%
9	Aspis Bank in Rethymno Crete	TH. PAPAYANNIS & PRTNS	2002	2002	76.302,27	Construction Design	100%
10	Aspis Bank in Larissa	TH. PAPAYANNIS & PRTNS	2002	2002	105.649,30	Construction Design	100%
11	Aspis Bank in Aspropyrgos	TH. PAPAYANNIS & PRTNS	2002	2002	97.100,00	Construction Design	100%
12	Aspis Bank in Tripoli	TH. PAPAYANNIS & PRTNS	2002	2002	93.100,00	Construction Design	100%
13	Aspis Bank in Komotini	TH. PAPAYANNIS & PRTNS	2003	2003	55.500,00	Construction Design	100%
14	Aspis Bank Bank in Kalohori – Thessaloniki	TH. PAPAYANNIS & PRTNS	2003	2003	37.000,00	Construction Design	100%
15	Rehabilitation of Aspis Bank Main Offices in Constitution Square	TH. PAPAYANNIS & PRTNS	2003	2003	78.300,00	Construction Design	100%
16	Main Offices of GENERAL BANK OF GREECE	GENERAL BANK OF GREECE DOMORINTHOS S.A.	2004	2004	66.786,00	Construction Design	100%
17	GENERAL BANK OF GREECE N. Phaliro Branch	GENERAL BANK OF GREECE DOMORINTHOS Ltd	2004	2004	200.043,20	Construction Design	100%
18	GENERAL BANK OF GREECE in Piraeus	GENERAL BANK OF GREECE DOMORINTHOS Ltd	2004	2004	39.865,00	Construction Design	100%
19	GENERAL BANK OF GREECE Kalohori Branch– Thessalonik	GENERAL BANK OF GREECE DOMORINTHOS Ltd	2005	2005	131.982,81	Construction Design	100%
20	GENERAL BANK OF GREECE Patision Branch	GENERAL BANK OF GREECE DOMORINTHOS Ltd	2005	2005	58.000,00	Construction Design	100%
21	GENERAL BANK OF GREECE AUDITORIUM	GENERAL BANK OF GREECE DOMORINTHOS Ltd	2005	2005	115.325,87	Construction Design	100%
22	GENERAL BANK OF GREECE Halkida Branch	GENERAL BANK OF GREECE DOMORINTHOS Ltd	2005	2005	59.852,90	Construction Design	100%
23	GENERAL BANK OF GREECE Larisa Branch	GENERAL BANK OF GREECE DOMORINTHOS Ltd	2005	2005	30.508,40	Construction Design	100%
24	GENERAL BANK OF GREECE Volos Branch	GENERAL BANK OF GREECE DOMORINTHOS Ltd	2005	2005	37.174,30	Construction Design	100%
25	GENERAL BANK OF GREECE Keratsini Branch	GENERAL BANK OF GREECE DOMORINTHOS Ltd	2005	2005	43.541,35	Construction Design	100%
26	Commercial Bank & Hellenic post office in Myconos	Commercial Bank of Greece & Hellenic post office	2008	2008	200.000,00	Construction Design	100%

**INDUSTRIAL STUDIES**

No	DESCRIPTION OF PROJECT	CLIENT	BEGINNING	END	PROJECT BUDJET	SUBJECT	PARTICIPATION PERCENTAGE
					EURO		
1	Auto vehicle Maintenance building Catania Italy	U.S. ARMY Corp of Engineers	1978	1979	146.735,14	Construction Design	100%
2	LABROPOULOS Bros S. A. Building - Air Conditioning	LABROPOULOS Bros S. A.	1988	1988	88.041,08	Construction Design and supervision	100%
3	ANELOR S.A. (L' OREAL) Factory Dept. - Air Conditioning	ANELOR S.A.	1989	1989	117.388,11	Construction Design	100%
4	LOIMAC - LOIPLAST Factory Nikaia Attica	LOISOS	1990	1991	146.735,14	Construction Design	50%
5	DELTA S.A. Industrial installations at Aghios Stefanos, Attica Yogurt factory - Ice Cream freezer	FASMA CONSULTANTS	1991	1991	5.869.405,72	Construction Design	9%
6	EDRASI - PSALIDAS S.A. Workshop Building Koropi Attica	EDRASI - PSALIDAS S.A.	1992	1993	352.164,34	Construction Design and supervision	100%
7	Olympic Airlines Hangar in Athens	OLYMPIC AIRLINES	1989	1989	146.735,14	Construction Design	35%
8	Paper Cutting Factory , storage and office building of Typohartiki S.A. at Koropi Attika	DOMORINTHOS Ltd	1995	1997	733.675,71	Construction Design	100%
9	Building – exterior – energy saving installations – venerable energy sources for Queen Castle Park	TH. PAPAYANNIS & PRNTS	1995	1995	880.410,85	Preliminary Design	20%
10	Underground garage of the Greek Parliament (750 cars )	GEK S.A. - EDRASI - PSALIDAS S.A.- ATEMKE	1995	1995	2.347.762,20	Final Design for Bidding	100%
11	Aircrafts service building AVIONICS in Larissa	GENERAL AIRFORCE HEADQUARTERS	1998	1999	1.496.698,45	Construction Design	50%
12	3 story underground Garage in Agrinio (220 cars)	ODYSSEUS S.A.	1997	1998	586.940,57	Final Design	100%
13	2 story underground Garage in Larissa (240 cars)	ANAPLASEON S.A.	1998	1998	586.940,57	Final Design for Bidding	50%
14	Construction of an underground parking and formation of Court Square (120 cars)	K. ANAGNOSTOPOULOS K. MAKRIS CONTRACTORS	1999	1999	293.470,28	Final Design for Bidding	50%
15	Transferring of Salonica Meat Market to New Menemeni of Salonica	SERES TECHNICAL COMPANY S.A.	2000	2000	2.934.703	Final Design for Bidding	100%
16	Warehouse and office building of INTRACOM in Koropi Attica	INTRACOM S.A. DOMORINTHOΣ Ltd	2000	2000	1.173.881,14	Construction Design	100%
17	Competition for the creation of underground garage, new main entrance for the main building of OTE in Marousi – Attica (575 cars)	OTE S.A.	2001	2001	880.410,86	Preliminary Design	100%
18	BIOKOSMOS Radio – pharmacy Production Building	BIOKOSMOS S.A.	2001	2002	440.205,42	Construction Design	100%
19	Harbour works for transportation of mud from the biological plant in Island Psyttalia and Akrokeramos.	ATHINA AETBTE	2002	2002	293.470,28	Construction Design & Tender Documents	100%
20	JP-118/Jakhira Camp Upgrade in Libya	IOANNOY PARASKEUIDIS SA	2002	2002	1.173.881,14	Construction Design	100%
21	LEKOS Food Production Building	LEKOS S.A.	2003	2004	500.000,00	Construction Design	100%
22	General Warehouse of the Gas supply Company of Attica	GAS SUPPLY COMPANY OF ATTICA	2003	2004	800.000,00	Construction Design	100%
23	Hellenic National Meteorological Service (HNMS) Main Building, New Meteorological Radar Building in Aigina. Modernization of HNMS for the Olympic Games 2004	GENER S.A.- IFS HELLAS S.A. - GIGERTON S.A	2003	2004	1.280.000,00	Construction Design	100%
24	Rehabilitation of SHOP & TRADE S.A. Warehouse.	ARCON S.A. - SHOP & TRADE S.A.	2003	2004	250.000,00	Construction Design	100%

**INDUSTRIAL STUDIES**

No	DESCRIPTION OF PROJECT	CLIENT	BEGINNING	END	PROJECT BUDJET	SUBJECT	PARTICIPATION PERCENTAGE
					EURO		
25	Administration and Warehouse Facilities (Logistics) of TOYOTA (14.000 m2) in Aspropyrgos.	PMS PISIMISIS AEBE SMART DEVELOPMENT S.A.	2004	2005	2.347.762,29	Final & Construction Design	100%
26	New Industrial Building of MEDIA STROM, Koropi - Attica	MEDIA STROM S.A.	2005	2005	1.000.000,00	Construction Design	100%
27	BSB LTD New Building located at the 10th km of National Road Athens-Lamia	BSB LTD	2006	2006	2.500.000,00	Construction Design	100%
28	New Logistics center in Ioannina, Greece	VERILOG S.A.	2007	2007	1.350.000,00	Construction Design	100%
29	Factory for special vehicles electrical and hydraulic systems construction and repair, and three offices floors of Helesys in Markopoulo Industrial Area	HELESIS S.A.	2007	2009	1.500.000,00	Construction Design	100%
30	Warehouse for products refrigeration and repackaging, with meat and cheese laboratories and three offices floors of Keep & Pick in Markopoulo Industrial Area	KEEP & PICK S.A.	2007	2009	1.000.000,00	Construction Design	100%
31	Life means workshop building and electrical workshop in battle wing 115 at Souda, Crete	KOKKINOS S.A.	2004	2004	90.000,00	Construction Design	100%
32	Cars parking multistory building at the crossroads of Dimitriadou and Phillelinon streets in Volos	THEMELIOSI S.A. THESSALIKI S.A.	2004	2004	1.400.000,00	Final Design for Bidding & Construction Design	100%
33	Reform of the old factory VIOFIAL	HOROTEHNIKI S.A.	2006	2006	1.250.000,00	Final Design for Bidding	100%
34	Design - Construction - Financing and Concession of two underground car stations and total formation of ground area: i) Cyprous str. & Patission Av. ii) Psiloritis & Diliyani streets (formely Alkazar cinema)	TECAL S.A. DOMOTEHNIKI S.A.	2006	2006	800.000,00	Final Design for Bidding & Construction Design	100%
35	Construction of underground passages at km position 35+585 of Salonica - Plateos train line and km position 59+570 of Athens - Salonica train line without interruption of trains traffic	PROTYPOS TEHNIKI S.A.	2006	2006	300.000,00	Construction Design	100%
36	Design - Financing and Technical Management of buildings installation for six (6) fire brigades departments and one (1) station	Joint Venture KOURTIDES S.A. GANTZOULAS S.A.	2008	2008	4.000.000,00	Final Design for Bidding & Construction Design	100%
37	"SEMPO LOGISTICS BUILDING" at new Ikonio in Perama. 7500m2 building for the transport and storage of COSCO merchandise at deck 2 of OLP.	PCDC S.A.	2013	2013	EM: 1.100.000,00 REFRIGERATION 397,900,00	Construction Design	100%
38	Installation reform of PIRELLI industrial building in Aspropyrgos, Attica	PIRELLI S.A.	2014	2014	100.000,00	Construction Design	100%
39	Installation reform of PIRELLI industrial building in Argyroupolis, Attica	PIRELLI S.A.	2015	2015	150.000,00	Construction Design	100%



**STORES**

No	DESCRIPTION OF PROJECT	CLIENT	BEGINNING	END	PROJECT BUDGET EURO	SUBJECT	PARTICIPATION PERCENTAGE
1	Rehabilitation of Food Centre Heidelberg – W. Germany	U.S. ARMY Corp of Engineers	1978	1979	190.755,68	Construction Design	100%
2	Rehabilitation of Food Centre Fulda – W. Germany	U.S. ARMY Corp of Engineers	1978	1979	58.694,05	Construction Design	100%
3	General Warehouse Catania Italy	U.S. ARMY Corp of Engineers	1978	1979	146.735,14	Construction Design	100%
4	Court of justice restaurant	Ministry of Public Works	1987	1987	293.470,28	Construction Design	35%
5	Multistores complex in N. Erythra	G. Sigalas	1989	1989	176.082,14	Construction Design	100%
6	Duty-free stores Doorani store and Niki store	Duty Free Shop S.A.	1989	1990	117.388,11	Construction Design	100%
7	HVAC design for Duty-free stores: • Promahonas • Rhodes Airport • Kos Airport • Corfu Port • Corfu Airport • Athens West Airport • Athens East Airport • Hellenicon Main Storage	Duty Free Shop S.A.	1989	1991	586.940,57	Construction Design & Tender Documents	100%
8	MARKS & SPENCER stores in Salonica	HELLINIKI TECHNODOMIKI	1990	1990	146.735,14	Construction Design	35%
9	PRISUNIC MARINOPOULOS supermarket in Veria	HELLINIKI TECHNODOMIKI	1990	1991	440.205,42	Construction Design	35%
10	Supermarket PASHALIAS in Serres	PASHALIAS S.A.	1990	1991	586.940,57	Construction Design	35%
11	OLYMPIC AIRWAYS Supermarket Hellinikon	OLYMPIC AIRWAYS	1990	1991	440.205,42	Construction Design	50%
12	CARREFOUR supermarket with 3 underground garages in Kifissias Avenue	CARREFOUR S.A.	1998	1999	1.467.351,43	Consulting services & supervision of works	100%
13	CARREFOUR Hypermarket with 3 underground garages in Geraka Athens (48.500 m <sup>2</sup> )	CARREFOUR S.A.	1998	2000	4.402.054,29	Construction Design & Supervision	100%
14	CARREFOUR Hypermarket and commercial center in Patras (19.000 m <sup>2</sup> )	CARREFOUR S.A.	2001	2002	4.402.054,29	Construction Design & Supervision	100%
15	CARREFOUR Hypermarket and commercial center in Athinon Ave store (12.000 m <sup>2</sup> ), offices (700 m <sup>2</sup> ), warehouse and 2 underground parking 660 cars (22.000 m <sup>2</sup> )	CARREFOUR S.A.	2002	2003	4.402.054,29	Construction Design & Supervision	50%
16	CARREFOUR Rehabilitation of "SPLENDID" Commercial Center in Peiraeus	CARREFOUR S.A.	2003	2004	835.000,00	Construction Design	100%
17	Repair and rehabilitation of electromechanical installations and Re-arrangement of the block of buildings "OLD ICE FACTORY ASTIR" and conversion into a mall.	ELECTRONIKI S.A. JOHN STROUTSIS	2004	2005	1.500.000,00	Construction Design	100%
18	Conversion from hotel building to a commercial store FNAC at Lazarakis and S. Karagiorga streets in Glyfada.	EXONI S.A. - CVZ HELLAS Ltd	2007	2008	800.000,00	Construction Design & Supervision	100%
19	Commercial center in New Alikarnassos, Crete	KAROZOS CONSTRUCTIONS S.A.	2007	2007	1.500.000,00	Final Design	100%
20	Rehabilitation of FNAC store Mitropoleos 80, Athens	CVZ HELLAS Ltd	2007	2008	800.000,00	Construction Design & Supervision	100%
21	Stores, Offices and housing complex with three (3) underground garages in Moshato, Attica	A. MIHALODIMITRAKIS	2007	2007	550.000,00	Construction Design & Supervision	100%
22	CARREFOUR Hypermarket ERAM 5 in Tehran Iran	CVZ HELLAS Ltd	2007	2009	800.000,00	Design Consulting services	100%

**STORES**

<b>No</b>	<b>DESCRIPTION OF PROJECT</b>	<b>CLIENT</b>	<b>BEGINNING</b>	<b>END</b>	<b>PROJECT BUDJET EURO</b>	<b>SUBJECT</b>	<b>PARTICIPATION PERCENTAGE</b>
<b>23</b>	CARREFOUR Hypermarket in TEG commercial center in Tirana, Albania	YAP Co – Carrefour Marinopoulos	2011	2012	2.000.000,00	Construction Design & Supervision	100%
<b>24</b>	CARREFOUR Hypermarket QTU Tirana, Albania	YAP Co – Carrefour Marinopoulos	2012	2012	2.000.000,00	Construction Design	100%
<b>25</b>	CARREFOUR Hypermarket in SABA commercial center in Tehran Iran.	YAP Co	2013	2014	3.000.000,00	Construction Design	100%

**PPC (PUBLIC POWER CORPORATION )PROJECTS**

No	DESCRIPTION OF PROJECT	CLIENT	BEGINNING	END	PROJECT BUDJET EURO	SUBJECT	PARTICIPATION PERCENTAGE
1	Unwatering and Drainage Installations of Hydroelectric station Pournari II on River Arahthos (2 x 15 MW)	PPC	1985	1994	586.940,59	Construction Design	100%
2	HVAC design of Hydroelectric station Thyssavros on River Nestos (3 x 100 MW)	PPC	1989	1992	880.410,85	Preliminary design for bidding and construction technical support	80%
3	HVAC design of Hydroelectric station Platanovrissi on River Nestos (2 x 60 MW)	PPC	1991	1992	645.634,63	Preliminary design for bidding and construction technical support	100%
4	HVAC design of Hydroelectric station Messohora on River Acheloos (2 x 80 MW)	PPC	1991	1992	733.675,71	Energy study & Preliminary design	100%
5	HVAC design of Hydroelectric station Stratos I on River Acheloos (2 x 75 MW)	PPC	1986	1989	586.940,57	Site technical support and commissioning	100%
6	HVAC design of Hydroelectric station Stratos II on River Acheloos (2 x 3.5 MW)	PPC	1985	1987	352.164,34	Construction design and site technical support	100%
7	HVAC design of Hydroelectric station Sfikia on River Aliakmon (3 x 100 MW)	PPC	1986	1986	586.940,57	Testing balancing and commissioning of the installation	60%



**TRAVELERS SERVICE AREA**

No	DESCRIPTION OF PROJECT	CLIENT	BEGINNING	END	PROJECT BUDJET EURO	SUBJECT	PARTICIPATION PERCENTAGE
1	Auto Service Station TSA SERIOS Complex 43o km Athina-Lamia	ATEMKE S.A.	1993	1995	3.521.643,43	Construction Design & Supervision	40%
2	Auto service station complex at Pollykastro Restaurant – motel – fuel station – washing – route help service – exterior works	EKO S.A.	1994	1995	3.521.643,43	Construction Design	50%
3	Auto service station complex at Artemission Restaurant – motel – fuel station – washing – route help service – exterior works	DOMORINTHOS Ltd	1994	1995	880.410,85	Final Design for Bidding & Construction Design	50%
4	AVIN Auto Service Station Complex at Megara	DOMORINTHOS Ltd	1994	1995	1.173.881,14	Final Design for Bidding	50%
5	ELDA retail in SEA NESTANIS	ELDA S.A.	1995	1996	880.410,85	Final Design for Bidding	50%
6	Rest Areas on both sides along Egnatia Street Section 15.20 – Location Amaranta, Komotini	EGNATIA STREET S.A.	2003	2005	100.000,00	Construction Design	100%
7	Rest Areas on both sides along Egnatia Street Section 15.70 – Location Doriko, Alexandroupolis	EGNATIA STREET S.A.	2003	2005	100.000,00	Construction Design	100%

**ROAD LIGHTING – IRRIGATION – TOLL STATIONS**

No	DESCRIPTION OF PROJECT	CLIENT	BEGINNING	END	PROJECT BUDJET EURO	SUBJECT	PARTICIPATION PERCENTAGE
1	National road Athens – Corinthe – Patras Section: Kakia Scala Installation of road lighting , irrigation and telephone lines.	OMEK S.A. (Consultants of: ΕΥΔΕ/ ΠΑΘΕ)	1998	1998	1.173.881,14	Proofing of bidding documents	100%
2	National road PATHE Patras Bypass road Road lighting and telephone SOS Node K1 and connection with Corinthe – Patras road with primary irrigation network	OMEK S.A. (Consultants of: ΕΥΔΕ/ ΠΑΘΕ)	1998	1998	880.410,85	Design proofing	100%
3	National road Athens – Corinthe – Patras Section : Kalamaki – Canal Road lighting	OMEK S.A. (Consultants of: ΕΥΔΕ/ ΠΑΘΕ)	1998	1998	952.572,66	Preparation of design cost documents and technical specifications	100%
4	National road Athens – Corinthe – Patras Section : Rema Giorgou – Megaron Road lighting	OMEK S.A. (Consultants of: ΕΥΔΕ/ ΠΑΘΕ)	1998	1998	586.940,57	Preparation of design cost documents and technical specifications	100%
5	National road PATHE - Construction of supplementary works Section : Athens – Yliki – Design of irrigation network control system	OMEK S.A. (Consultants of: ΕΥΔΕ/ ΠΑΘΕ)	1999	1999	293.470,28	Design proofing	100%
6	National road PATHE - Section : Pelasgias Tolls – Node Aghion Theodoron – Design of irrigation system and irrigation control system	OMEK S.A. (Consultants of: ΕΥΔΕ/ ΠΑΘΕ)	1999	1999	993.150,08	Design proofing	100%
7	National road PATHE E/M installation Toll station Pelasgia	OMEK S.A. (Consultants of: ΕΥΔΕ/ ΠΑΘΕ)	1999	1999	821.716,80	Preparation of bidding documents	100%
8	National Road PATHE – Completion of Tragana toll station design for section Yliki – Ag. Konstantinos	OMEK S.A. (Consultants of: ΕΥΔΕ/ ΠΑΘΕ)	2000	2000	2.167.813,13	Proofing of construction design in E/M installations and bidding documents	100%
9	National Road PATHE - Patras Bypass Road Road lighting for sections K4-K5 Node K5 and section of entrance from Pyrgos up to Node K7	OMEK S.A. (Consultants of: ΕΥΔΕ/ ΠΑΘΕ)	2000	2000	1.027.146,00	Construction Design	100%
10	National Road PATHE - Patras Bypass Road Road lighting for sections K4-K5 Node K4	OMEK S.A. (Consultants of: ΕΥΔΕ/ ΠΑΘΕ)	2000	2000	733.675,71	Construction Design	100%
11	National road Athens – Corinthe Road Lighting of Node Megaron and Node Kalamakiou	OMEK S.A. (Consultants of: ΕΥΔΕ/ ΠΑΘΕ)	2000	2000	1.539.513,23	Design proofing	100%
12	Road Lighting for National road Athens – Shimatari - Section: Metamorphosis - Variobobi	OMEK S.A. (Consultants of: ΕΥΔΕ/ ΠΑΘΕ)	2000	2000	586.940,57	Design proofing	100%
13	Road Lighting and lighting of bridge Greveniotou - Section 4.1.5 of Egnatia Road	EGNATIA ODOS S.A. V. KONSTADINIDIS & PARTNERS	2003	2004	100.000,00	Construction Design	100%
14	Design – Construction – Financing – Operation – Maintenance and Exploitation of The Motorway Korinthos – Tripoli – Kalamata Motorway And Lefktro – Sparti Branch	ELLINIKES DIADROMES SOMAGUE, FCC, SACYR, ATTI - KAT S.A., PROODEFTIKI S.A	2005	2006	80.000.000,00	Preliminary Design for Bidding	100%
15	Design – Construction – Financing – Operation – Maintenance and Exploitation of The Central Greece (E65) Motorway	ELLINIKES DIADROMES SOMAGUE, FCC, SACYR, ATTI - KAT S.A., PROODEFTIKI S.A	2006	2006	100.000.000,00	Preliminary Design for Bidding	100%

**ROAD LIGHTING – IRRIGATION – TOLL STATIONS**

<b>No</b>	<b>DESCRIPTION OF PROJECT</b>	<b>CLIENT</b>	<b>BEGINNING</b>	<b>END</b>	<b>PROJECT BUDJET EURO</b>	<b>SUBJECT</b>	<b>PARTICIPATION PERCENTAGE</b>
16	Construction of motorway with auxiliary works for the part "Skarfia (OSE bridge) - beginning of motorway Thermopyles" on the highway Athens - Salonica	ATTI KAT S.A.	2008	2009	1.961.866,64	Construction Design	100%
17	Roadlighting construction of peripheral road and new entrance Rhodes city	Ministry of Public Works	2010	2010	432.636,00	Construction Design	100%
18	Extension of trainlines alongside road at Aghios Stefanos, Attica Roadlighting design	Municipality of Kifissia	2011	2011	69198.70	Construction Design	100%



**TUNNELS ON NATIONAL ROADS**

No	DESCRIPTION OF PROJECT	CLIENT	BEGINNING	END	PROJECT BUDJET EURO	SUBJECT	PARTICIPATION PERCENTAGE
1	Egnatia Road Sections 3.1 & 3.2	EGNATIA ODOS S.A.	1997	1998	5.869.405,72	Final Design	50%
2	E/M installations design for tunnels of sections K1 up to K4 of Patras Bypass Road (contractor: Sarantopoulos S.A.)	OMEK S.A. (Consultants of: ΕΥΔΕ/ ΠΑΘΕ)	1998	1999	2.609.302,42	Proofing of construction design and bidding documents	100%
3	E/M installations design for tunnels Guirokomiou and Archeologuikou Horou (Contractor: J/V AEGEK – TRITON II)	OMEK S.A. (Consultants of: ΕΥΔΕ/ ΠΑΘΕ)	1999	2000	6.025.694,25	Proofing of construction design and bidding documents	100%
4	Constriction of Node K5 and supplementary works of Patras Bypass Road and 1st Phase of River Glafkos works (Contractor MOHLOS S.A.)	OMEK S.A. (Consultants of: ΕΥΔΕ/ ΠΑΘΕ)	2000	2000	2.261.321,03	Tunnel lighting predesign proofing	100%
5	Naupaktos By Pass road – Roadlighting of Platanitis Node K1 and Installations of Technical Cut & Cover	KIROS S.A.	2005	2005	1.400.000,00	Construction Design	100%

**HOLY MONASTERIES - CHURCHES**

No	DESCRIPTION OF PROJECT	CLIENT	BEGINNING	END	PROJECT BUDJET EURO	SUBJECT	PARTICIPATION PERCENTAGE
1	CHURCH OF AG. NIKOLAOS HALANDRI AIR-CONDITIONING	CHURCH OF AG. NIKOLAOS	1992	1992	176.082,17	Construction Design & Supervision	100%
2	HOLY MONASTERY OF BATOPEDIO Electromechanical installations at existing buildings (vestry room, icon storage room, hostel, church, e.t.c.) Infrastucture installations	HOLY MONASTERY OF BATOPEDIO	1995	1997	2.935.000,00	Construction Design & Supervision	50%
3	MONASTERY OF MEGISTI LAVRA - MOUNT ATHOS Rehabilitation of existing buildings (vestry museum building)	HOLY MONASTERY OF MEGISTI LAVRA	2004	2005	800.000,00	Construction Design	100%
4	New chappel of Hellenic Police at the Athens International Airport "Eleftherios Venizelos" in Spata, Athens	P & M KOUFOPOULOS ARCHITECTS	2006	2006	150.000,00	Construction Design	100%
5	Rehabilitaion of Monastery buildings complex and reform of surrounding areas at the Holy Monastery of Apostle Andrew in Cyprus	P & M KOUFOPOULOS ARCHITECTS	2006	2007	500.000,00	Construction Design	100%
6	Center of Culture, Education And Technology at the Hellenic church at St. Ioannis Kareas, Attica	HELLENIC CHURCH SYMMEAN S.A.	2006	2007	500.000.000,00	Construction Design	40%
7	Restoration of St. George Holy Monastery at the castle of Island Skyros	HOLY MONASTERY OF MEGISTI LAVRA	2006	2007	500.000,00	Construction Design	100%
8	Monastery of PETRA in KARDITSA	HOLY MONASTERY OF PETRA	2012	2014	733.401,55	Construction Design	100%
9	PANAGIA PANTOVASILISSA church in BOURSA Rehabilitation of existing church	HOLY MONASTERY OF BATOPEDION	2013	2013	200.000,00	Construction Design	100%
10	TAXIARCHON SIGIS church in BOURSA Rehabilitation of existing church	METROPOLE OF PROUSA	2013	2013	200.000,00	Construction Design	100%
11	St. Spyridon new church with cultural and social activities in Koropi, Attica	HOLY METROPOLE OF MESSOGEAS & LAVREOTIKI	2014	2014	400.000,00	Construction Design	100%

**SPORTING CENTERS**

No	DESCRIPTION OF PROJECT	CLIENT	BEGINNING	END	PROJECT BUDJET EURO	SUBJECT	PARTICIPATION PERCENTAGE
1	U.S. ARMY Eng. Dept. Sports Hall Insirlic Turkey	U.S. ARMY Corp of Engineers	1982	1983	381.511,37	Construction Design	100%
2	MUNICIPALITY OF KALAMATA Electromechanical Installations Yaughting facilities (250 yaughts)	MUNICIPALITY OF KALAMATA	1988	1989	308.143,80	Construction Design	30%
3	COUNTY OF SAMOS Electromechanical Installations Yaughting facilities (40 yaughts Pithagorio, Samos)	COUNTY OF SAMOS	1988	1989	93.910,49	Construction Design	50%
4	MUNICIPALITY OF PAROS Sports Center	MUNICIPALITY OF PAROS	1989	1989	1.760.821,71	Preliminary Design	35%
5	MUNICIPALITY OF DAFNI Sports Hall	GNOMON S.A.	1991	1992	1.027.146,00	Construction Design	35%
6	MINISTRY OF EDUCATION Electromechanical Installation Vallianios Schools Sports Hall in Cephalonia	TH. PAPAYANNIS & PRTNS	1992	1994	352.164,34	Construction Design	30%
7	BIG CLOSED GYMNASIUM of Thermi in Salonica. Sports Hall for 18.000 spectators – conference center, etc.	TH. PAPAYANNIS & PRTNS	1995	1997	20.542.920,03	Construction design for weak currents and final design for plumbing fire protection	20%
8	Olympic Horse Racing Center, Markopoulo Attica	ATTI-KAT ATE BIOTER S.A. EKTER S.A. ETEP S.A.	2001	2001	181.951.577,40	Final Design	50%
9	MPC	MIHANIKI S.A.	2001	2001	43.536.316,95	Final Design	100%
10	IBC	MIHANIKI S.A. - TECHNIKAL UNION S.A. – KORONTZIS S.A.	2001	2001	41.085.840,06	Final Design	50%
11	Swimming Pool Center in Kilkis	KOMVOS ABETE	2001	2001	1.173.881,14	Final Design	100%
12	Panthesaliko Stadium in N. Ionia at Volos	CYBARCO TECHNIKI OLYMPIAKI	2001	2002	12.325.752,01	Final & Construction Design	20%
13	Pampelloponisiako National Stadium in Patra	EKTER SARANTOPOULOS GENER	2001	2002	7.336.757,15	Final Design for Bidding	100%
14	Kaftajoglio Stadium in Thessaloniki	DIEKAT S.A.	2001	2002	11.445.341,16	Final Design for Bidding	70%
15	Swimming Pool Center in OAKA, Athens	ETEK S.A.	2001	2002	3.815.113,71	Final Design for Bidding	100%
16	Proofing of Design and Development of OLYMPIC CENTER KANO – KAYAK AT in Skinia - MARATHONA	GENER S.A.	2002	2002	1.173.881,14	Design proofing	100%
17	Swimming Pool Center in Amfissa	PROMITHEAS ATEBE	2004	2004	1.000.000,00	Final Design for Bidding	100%



**SPORTING CENTERS**

<b>No</b>	<b>DESCRIPTION OF PROJECT</b>	<b>CLIENT</b>	<b>BEGINNING</b>	<b>END</b>	<b>PROJECT BUDGET EURO</b>	<b>SUBJECT</b>	<b>PARTICIPATION PERCENTAGE</b>
<b>18</b>	Swimming Pool Center in Veria	PROMITHEAS ATEBE	2004	2004	1.300.000,00	Final Design for Bidding	100%
<b>19</b>	Swimming Pool Center in Pyrgos	MUNICIPALITY OF PYRGOS	2004	2004	2.000.000,00	Construction Design	100%
<b>20</b>	Swimming Pool Center in Lamia	PROMITHEAS S.A.	2005	2005	1.300.000,00	Construction Design	100%
<b>21</b>	Serafion Swimming Pool Center- Athletic & Cultural Center	ALEXANDROS TECHNIKI S.A. KYROMITIS BROS. S.A.	2006	2006	2.000.000,00	Final Design for Bidding	100%
<b>22</b>	Completion of semicompleted Swimming Pool Center of the Municipality of Aghia Paraskevi, Attica	TECAL S.A.	2007	2007	1.500.000,00	Final Design for Bidding	100%

**INFRA STRUCTURE**

<b>No</b>	<b>DESCRIPTION OF PROJECT</b>	<b>CLIENT</b>	<b>BEGINNING</b>	<b>END</b>	<b>PROJECT BUDJET EURO</b>	<b>SUBJECT</b>	<b>PARTICIPATION PERCENTAGE</b>
1	Panhellenic holiday buildings association of I.K.A. stuff in Evia	PROMITHEAS S.A.	2007	2008	3.094.528,62	Construction Design	100%
2	Construction of main sewage channels of Coastal housing from Erineou to Aegira municipalities	E.E.L. of PATRAS	2008	2009	PUMP ROOMS: 1.930.505,62 PIPING: 32.845.920,00	Construction Design	100%
3	ZAPPION MEGARON IRRIGATION	MIHANOLOGIKI ELLADOS S.A.	2009	2009	1.925.204,00	Construction Design	100%

**POWER PLANTS**

No	DESCRIPTION OF PROJECT	CLIENT	BEGINN	END	PROJECT BUDJET EURO	SUBJECT	PARTICIPATION PERCENTAGE
1	Energy study and bidding E/M design for Hydroelectric station Pournari II on River Arahthos in Arta (2 x 15 MW) + (1 x 1.5 MW)	PPC	1985	1994	14.673.514,30	Design for bidding and approval of construction design. Participation in model tests for water inlet and turbine.	100%
2	E/M Installations of Hydroelectric Station Stratos I on River Acheloos in Agrinion (2 x 75 MW)	PPC	1986	1989	29.347.028,61	Proofing and approval of construction design	30%
3	E/M Installations of Hydroelectric Station Stratos II on River Acheloos in Agrinion (2 x 3.5 MW)	PPC	1985	1987	5.869.405,72	Proofing and approval of construction design	80%
4	Pump station Politson on Aaos River (2 x 630 KW) + (2 x 300 KW)	PPC	1986	1986	1.467.351,43	Participation on commissioning tests	35%
5	Pump station Peta in Arta (4 x 50 HP)	PPC	1988	1988	733.675,71	Bidding design	40%
6	Energy design for Holly Monastery Simonos Pertas Holly mountain of Athos	FASMA CONSULTANTS	1990	1990	5.869.405,72	Construction Design	30%
7	Energy study anr predesign of Hydroelectric Station Temenos d River Nestos (3 x 7 MW)	PPC	1990	1991	12.399.119,59	Energy study and predesign	50%
8	District Heating in Megalopoli of DEPYPPAPM	CONSTANTINIDIS S.A. - ELEKTROMEK S.A.	2000	2000	7.630.227,43	Final Design for Bidding	33%
9	Photovoltaic installations on roofs	Stavros Niarchos Foundation (ISN)	2013	2014	400.000,00	Construction Design, Supervision of works & Project management	100%

**SOLID WASTES DISPOSAL LANDFILL SITE**

<b>No</b>	<b>DESCRIPTION OF PROJECT</b>	<b>CLIENT</b>	<b>BEGINNING</b>	<b>END</b>	<b>PROJECT BUDGET EURO</b>	<b>SUBJECT</b>	<b>PARTICIPATION PERCENTAGE</b>
1	"Phase A construction of 2 <sup>nd</sup> Solid Wastes Disposal Landfill Site in Western Attica at location Scalistiri in the Municipality of Phylis"	BILFINGER BERGER - BAUGESELLSCHAFTm.b.H. – UEG AG	2005	2005	6.419.000	Final Design for bidding	100%
2	Design – Construction of "Solid Wastes Disposal Landfill Site in Southern Corfu"	BILFINGER BERGER - BAUGESELLSCHAFTm.b.H. – UEG AG	2005	2005	235.000	Final Design for Bidding	100%
3	Design – Construction of "Solid Wastes Disposal Landfill Site in Western Ahaia"	BILFINGER BERGER - BAUGESELLSCHAFTm.b.H. – UEG AG	2005	2005	500.000	Final Design for Bidding	100%
4	Design – Construction of "Solid Wastes Disposal Landfill Site in (OEDA) Southeastern Attica at location "Vragoni of Keratea" at Municipality of Lavreotiki"	BILFINGER BERGER - BAUGESELLSCHAFTm.b.H. – UEG AG	2005	2005	1.930.000	Final Design for Bidding	100%
5	Design – Construction of "Solid Wastes Disposal Landfill Site in Karpathos"	BILFINGER BERGER - BAUGESELLSCHAFTm.b.H. – UEG AG	2006	2006	200.000	Final Design for bidding	100%



**RESIDENCES COMPLEX - RESORTS**

No	DESCRIPTION OF PROJECT	CLIENT	BEGINNING	END	PROJECT BUDJET EURO	SUBJECT	PARTICIPATION PERCENTAGE
1	Program MOUSF Rehabilitation of Barracks and Messhalls W. Germany	U.S. ARMY Corp of Engineers	1972	1974	880.410,86	Construction Design	25%
2	Program MASTS Rehabilitation of 250 Buildings W. Germany	U.S. ARMY Corp of Engineers	1973	1975	352.164,34	Construction Design	25%
3	ARAMCO HOUSING East Area Saudi Arabia	ARAMCO HOUSING	1974	1975	880.410,86	Construction Design	50%
4	King Abdul Aziz Military Academy Rhiadh Saudi Arabia	SAUDI ARABIA MINISTRY OF DEFENCE	1976	1977	1.173.881,14	Construction Design	50%
5	Construction of Industrial City YANBU SAUDI ARABIA	SAUDI ARABIA MINISTRY OF industry	1979	1981	14.673.514,30	Construction Design	20%
6	Construction of new City (housing for 45.0000 people provision for extention for 100.000 people) BREGA LYBIA	LYBIAN COMMITTEE FOR PUBLIC WORKS	1979	1983	176.082.171,68	Construction Design	15%
7	Wildfliegen Barracks, W. Germany	U.S. ARMY Corp of Engineers	1980	1981	469.552,46	Construction Design	100%
8	Larson Barracks, W. Germany	U.S. ARMY Corp of Engineers	1980	1981	469.552,46	Construction Design	100%
9	Program MILCON Rehabilitation of 100 Buildings Nuremberg, W. Germany	U.S. ARMY Corp of Engineers	1981	1983	2.347.762,29	Construction Design	100%
10	East and West Center of Kalamata (112 stores - 300 residencies)	MUNICIPALITY OF KALAMATA	1987	1988	1.173.881,14	Construction Design	30%
11	Low Currents - TV of new residential center Kalamata	MUNICIPALITY OF KALAMATA	1987	1988	586.940,57	Construction Design	100%
12	Residence complex in Erithrea	LEVEKAT S.A.	1987	1988	58.694,06	Construction Design	100%
13	Residence complex in Kastri	LEVEKAT S.A.	1987	1988	67.498,16	Construction Design	100%
14	"Vardakis - Antoniadis" Tourism Housing Complex in Chania Crete	K. Vardakis S. Antoniades	1989	1989	1.467.351,43	Construction Design	100%
15	Restaurant on the seaside in Karathona, Nafplion, Greece	MUNICIPALITY OF NAUPLION	1989	1990	586.940,57	Construction Design	50%
16	Rehabilitation of Paladion Hotel. Edipsos Evia	K. KOITSANOS	1993	1994	205.429,20	Construction Design	100%
17	Residence complex in Vrilissia	EDRASI H. PSALIDAS S.A.	1995	1998	586.940,57	Construction Design & Supervision	100%
18	Reform of seaside of Nafplion sections A & B	MUNICIPALITY OF NAUPLION	1997	1999	431.401,32	Μελέτη εφαρμογής	100%
19	Building Installation in Aghios Kosmas	VES S.A.	2001	2002	586.940,57	Final Design for Bididng & Construction Design	100%
20	Complex of buildings of Hellenic Police in Amygdaleza - Attica	BIOTER S.A. - TH. KARAGIANNIS S.A.	2002	2002	6.368.305,21	Final Design for Bididng	100%
21	Residence complex In Kifissia	J & P DEVELOPMENT S.A.	2002	2002	1.800.000,00	Construction Design & Supervision	100%
22	Residence complex In Pallini	J & P DEVELOPMENT S.A.	2002	2002	3.000.000,00	Construction Design & Supervision	100%
23	New Building complex for the Ambassador and Diplomats of Kuwait Embassy	PAULIDIS ATEM	2002	2003	1.100.000,00	Construction Design	100%
24	Restoration of preservable building and conversion to Appartments at Delliyannis & Dionyssos Streets in Kefalari, Kifissia, Attica	G. PETRIS S.A.	2005	2007	500.000,00	Construction Design	100%
25	Gas & Firefighting installations at the Boarding House of "St. Anargyri" in Pallini, Attica	Boarding House "St. Anargyri"	2015	2015	100.000,00	Construction Design	100%
26	Mordau House in Voula	TH. PAPAYANNIS & PRTNS	2006	2008	400.000,00	Construction Design	100%

**RESIDENCES COMPLEX - RESORTS**

<b>No</b>	<b>DESCRIPTION OF PROJECT</b>	<b>CLIENT</b>	<b>BEGINNING</b>	<b>END</b>	<b>PROJECT BUDJET EURO</b>	<b>SUBJECT</b>	<b>PARTICIPATION PERCENTAGE</b>
27	Five story building of specific care "Ark of the World" in Athens	"Ark of the World" (with the cofinancing of Stavros Niarchos Foundation)	2014	2016	1.213.999,90	Final, Construction Design & supervision	100%

**ADMINISTRATON BUILDINGS AND CULTURAL CENTERS**

No	DESCRIPTION OF PROJECT	CLIENT	BEGINNING	END	PROJECT BUDJET EURO	SUBJECT	PARTICIPATION PERCENTAGE
1	Repair of the Townhall of Kalamata	MUNICIPALITY OF KALAMATA	1988	1989	337.490,83	Construction Design	50%
2	Rehabilitation of old building "Tsiggos" for the installation of the technical services Municipality of Kalamata.	MUNICIPALITY OF KALAMATA	1990	1991	733.675,71	Construction Design	50%
3	Rehabilitation of Phaliricon Delta building – Seminars Room, Restaurant, kitchen	MUNICIPALITY OF KALLITHEA	1990	1991	220.102,71	Construction Design & supervision	100%
4	Municipality of Korinthe – Library and picture gallery	MUNICIPALITY OF KORINTHE	1990	1991	308.143,80	Construction Design	50%
5	HVAC installations in the halls of the faculty of fine arts (Sikiaridion institution) at Pireous Str.	MELKA S.A. ERETBO S.A.	1995	1996	293.470,28	Construction Design	100%
6	Security Systems of Salonica Museum	MINISTRY OF CULTURE	1996	1996	440.205,43	Construction Design	50%
7	Archeological Museum of Kalamata	KAPETANIDI S.A.	1996	1996	440.205,43	Final Design for Bididng & Construction Design	50%
8	Old Archeological Museum of Ancient Olympia city	MINISTRY OF CULTURE	1996	1997	733.675,71	Construction Design	50%
9	Administration building in Tinos Island	MOTHER OF GOD INSTITUTION	1996	1997	704.328,68	Construction Design	50%
10	Rehabilitaion of Railway station of Salonica	OSE S.A.	1996	1997	880.410,86	Final Design	25%
11	Reform of the existing icons keeping building and conversion to an exhibition and collection space in the great holy monastery of Vatopaidi of Mount Athos	MINISTRY OF CULTURE	1997	1998	440.205,43	Final & Construction Design	50%
12	Museum of Cretan Ethnology in Vorus, Crete	KAPETANIDI S.A.	1998	1998	1.027.146,00	Final Design for Bididng	50%
13	Exhibition Center in Kavala	NESTOS ATE	1998	1999	528.246,51	Final & Construction Design	50%
14	Conversion of DELASSAL building to Court of Justice building in Thessaloniki	AKTOR S.A. G.ZOI & PRTNS	1998	1999	880.410,86	Final Design for Bididng	100%
15	Phrissiras Museum in Plaka, Athens	G.KALLIANIS ATE	1999	1999	293.470,28	Construction Design	100%
16	Rehabilitation and extension of taxation building in Neapolis	KED	1999	1999	328.686,72	Construction Design	100%
17	Mount Sina Foundation Libray in Atalanta, Greece	I.O.Σ.	1999	2000	1.173.881,14	Construction Design	100%
18	Labor center and center of Labor Youth in Kalamata	S.A. of Irrigation and sewage	2000	2000	939.104,91	Final Design for Bididng	100%
19	Laos Theatre in Metaxourgheion – Athens	SMALL RIDGE INVESTMENTS	2000	2001	1.173.881,14	Final Design	100%
20	E/M design of Keramikos Archeological area in Athens	MINISTRY OF CULTURE	1996	2001	1.512.064,37	Construction Design	20%
21	Student Club of University of Aigaio in Samos	KTISTOR S.A.	2002	2002	1.173.881,14	Final Design for Bididng	100%
22	Addition of a multipurpose Hall in the Olive museum of Sparta	CULTURAL TECHNOLOGICAL INSTITUTION ETBA S.A.	2002	2003	161.000,00	Construction Design	100%
23	Administration and Cultural Building – Prefecture of Laconia	G. PETRIS S.A.	2002	2005	1.614.086,57	Final design for bidding & Construction Design	100%
24	Police Headquarters Building in Heraklio - Kreta	KTISTOR S.A.	2003	2003	2.054.292,00	Final Design for Bididng	100%
25	National Theatre of Athens	ETETH S.A. ERETVO S.A.	2004	2004	16.744.200,00	Final Design for Bididng	100%
26	Rehabilitation of four (4) preservable buildings, property of the municipality of Amphissa, at the location Harmaina	FOKIDA DEVELOPMENT S.A.	2004	2004	240.000,00	Construction Design	100%
27	Rehabilitation of the Municipal Theatre of Piraeus	ERETVO S.A.	2005	2006	9.000.000,00	Final Design for Bididng	100%

**ADMINISTRATON BUILDINGS AND CULTURAL CENTERS**

No	DESCRIPTION OF PROJECT	CLIENT	BEGINNING	END	PROJECT BUDJET EURO	SUBJECT	PARTICIPATION PERCENTAGE
28	Rehabilitation of the "LAIS" cinema Building for the housing of the Cinemateque of Greece	JOINT VENTURE ILISSOS CONSTRUCTIONS S.A. DAIDALOS S.A.	2005	2006	700.000,00	Final Design for Bididng & Construction Design	100%
30	New Cultural Center of " MICHALIS KAKOGIANNIS" foundation	PROET S.A.	2006	2006	1.000.000,00	Final Design for Bididng	100%
31	Restoration - Reinforcement of the municipal building "Ahtarika" in Heraklion, Crete	EDRASI H. PSALIDAS S.A. – MUNICIPALITY OF HERACLION	2007	2007	800.000,00	Final design	50%
32	New residency of the municipality of Aperantion in Granitsa, Greece	MUNICIPALITY OF APERANTION	2008	2009	400.000,00	Final design	100%
33	Construction of the Gravia Townhall (Panhellenic center of historical & cultural demonstrations in Central Greece with opening to the historical "Hostel of Gravia" Odysseas Androutsos)	MUNICIPALITY OF GRAVIA	2005	2009	1.500.000,00	Final design	50%
34	Conversion of Metaxourgeion building to a multipurpose Hall, property of the municipality of Athens	EDRACO S.A. KIROS S.A.	2005	2005	600.000,00	Final Design for Bididng	100%
35	Police stations at Souda and Kasteli in Crete	DOMORINTHOS Ltd	2006	2006	400.000,00	Final Design for Bididng	100%
36	Construction of an openair museum at the central section of the Roman Villa of Herodis Atticus in Loukou Kynourias	DOMOSTATIKI S.A.	2006	2006	700.000,00	Final Design for Bididng	100%
37	Design and construction of the Municipality Theater of Zakynthos	KERGO S.A.	2006	2006	1.000.000,00	Final Design for Bididng	100%
38	Repair - Modernization of the Museum of Spetses "Manor House of Hatziyanni Mexi"	MINISTRY OF CULTURE (with the cofinancing of Stavros Niarchos Foundation)	2007	2007	400.000,00	Preliminary, Final, Construction Design & tender documents	100%
39	Repair - Modernization of the Archeological Museum of Sparta	MINISTRY OF CULTURE	2007	2007	400.000,00	Preliminary design	100%
40	Police station building of Kastoria, Greece	JOINT VENTURE ALEXANDROS TECHNIKI S.A. S.M. ANEGERSI S.A.	2007	2007	1.500.000,00	Final Design for Bididng	100%
42	Restoration of a two story preservable building at the location of Harmaina, in Amphissa	TSEKOURA PANAGIOTA (Architect)	2008	2008	30.000,00	Construction Design	100%



**AIRPORTS**

No	DESCRIPTION OF PROJECT	CLIENT	BEGINNING	END	PROJECT BUDJET EURO	SUBJECT	PARTICIPATION PERCENTAGE
1	New airport Kithira buildings	KORONTZIS S.A.	1997	1997	1.173.881,14	Final Design for Bididng	50%
2	New airport Mykonos buildings	ZEUS S.A.	1998	1998	2.876.008,80	Final Design for Bididng	50%
3	New airport Aktion buildings	ZEUS S.A.	1998	1998	2.582.538,52	Final Design for Bididng	50%
4	Extension and reform of the state Airport of Heraklion "N. Kazantzakis"	KORONIS – GEKAT- IMBREGILO- GNOMON	1998	1998	5.575.935,44	Final Design for Bididng	50%
5	New Airport Rhodes	J & P HELLAS S.A.	1998	1998	10.858.400,59	Final Design for Bididng	10%
6	New Airport Zakynthos – Acoustics & Sound Insullation	J & P HELLAS S.A.	1999	1999	293.470,28	Final Design for Bididng	100%
7	HVAC design for the OLYMPIC AIRWAYS Aircraft Maintenance Hangar of the new airport in Spata	P & J ZANNIS MHXANIKH SE	1999	1999	8.804.108,59	Final Design for Bididng	100%
8	HVAC design for the OLYMPIC Aircrafts Hangar in Spata	P & J ZANNIS GANTZOULAS S.A.	1999	1999	1.027.146,00	Final Design for Bididng	100%
9	Maintenance shop of Olympic Airways in Spata	ATHINA AETB & TE	1999	1999	4.108.584,00	Final Design for Bididng	50%
10	Olympic Airways VIP/CIP Halls for Intra & Extra Schengen in New Airport of Athens	OLYMPIC AIRWAYS PAULIDIS ATEM	2001	2001	440.205,43	Construction Design	100%
11	Airport Extension, Auxiliary Installations and landscaping of the State Airport of Chania "I. Daskalogiannis", Greece	CIVIL AVIATON AUTHORITY	2003	2009	24.370.634,00	Preliminary, Final, Construction Design & Tender Documents	100%
12	Extension and reform of the departure halls for the state Airport of Heraklion "N. Kazantzakis"	DUTY FREE SHOPS BETAPLAN	2013	2014	600.000,00	Construction Design & Tender Documents	100%

**ENERGY INSPECTIONS AND ISSUE OF ENERGY CERTIFICATES**

<b>No</b>	<b>DESCRIPTION OF PROJECT</b>	<b>USE</b>	<b>CLIENT</b>	<b>YEAR</b>	<b>HEATED AREA (m<sup>2</sup>)</b>	<b>PARTICIPATION PERCENTAGE</b>
1	Commercial Center Mediterranean Cosmos at Pylaia, Salonica	Commercial center	PYLLAIA S.A.	2012	51.499,15	100%
2	Offices building "THE CECIL" at Kifissia, Attica	Offices	LAMDA PRIME PROPERTIES	2012	6.064,22	100%
3	Cinemas Center in the commercial center of Carrefour Thessalia in Larissa	Cinemas	KLEPIERRE LARISSA REAL ESTATE LTD	2012	5.075,12	100%
4	Shops in the commercial center of Carrefour Perivolos in Patra	Commercial center (Shops)	KLEPIERRE PERIVOLA PATRAS S.A.	2012-2016	6.083,31	100%
5	Hypermarket Carrefour in Larissa	Hypermarket	CAREFOUR MARINOPOULOS S.A.	2012	15.250,00	100%
6	Hypermarket building and recreation pole in the commercial center of Carrefour Macedonia at Pylaia, Salonica	Commercial center (Shops)	KLEPIERRE MACEDONIA S.A.	2012	12.452,17	100%
7	Hypermarket Carrefour at New Eukarpia in Salonica	Hypermarket	CAREFOUR MARINOPOULOS S.A.	2012	20.323,64	100%
8	Shops in the commercial center Carrefour Thessalia in Larissa	Commercial center (Shops)	KLEPIERRE LARISSA REAL ESTATE LTD	2012-2014	735,55	100%
9	Hypermarket Carrefour at Hellion, Attica	Hypermarket	CAREFOUR MARINOPOULOS S.A.	2013	8.837,29	100%
10	Hypermarket Carrefour at Passalimani in Peraious	Hypermarket	ETHNIKI LEASING S.A.	2013	7.508,95	100%